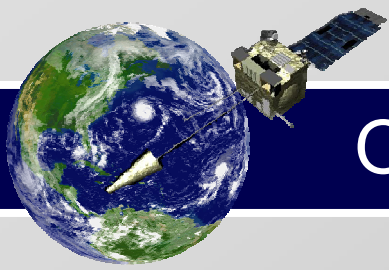




The Environmental Visualization Program and STAR:
Generating media and educational products with NOAA science

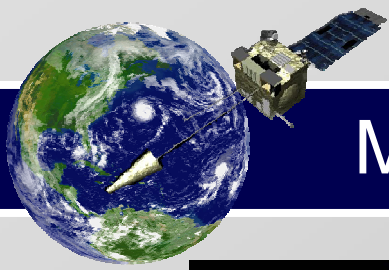
Dan Pisut
EVP Manager
dan.pisut@noaa.gov



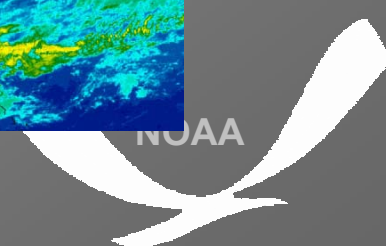
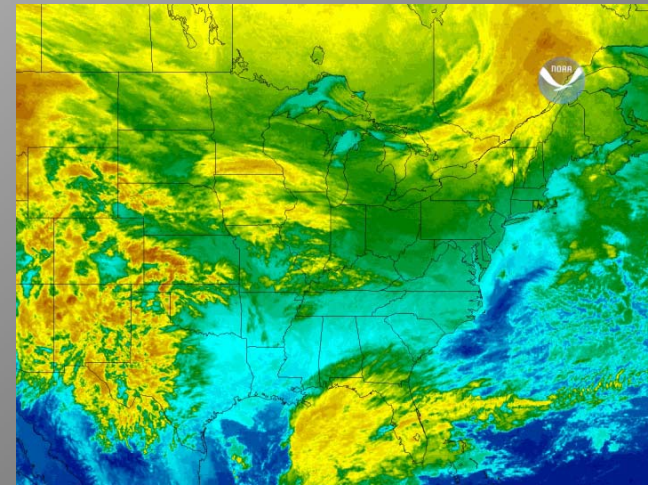
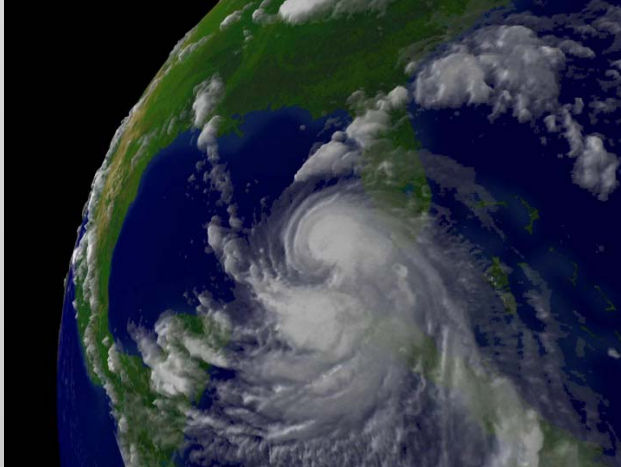
Overview

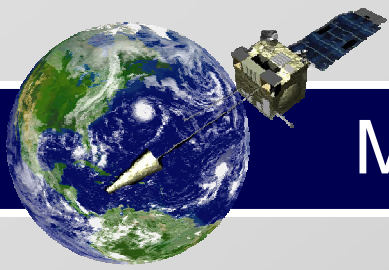
- Major activities
- NOAA outreach priorities
- Examples of STAR collaboration
 - What it takes
- Opportunities for collaborations





Major Activities: Media Production



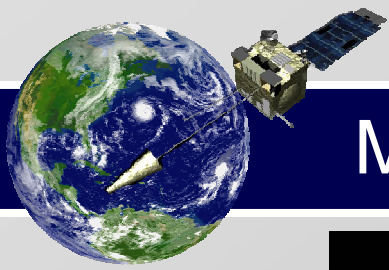


Major Activities: Museum Displays

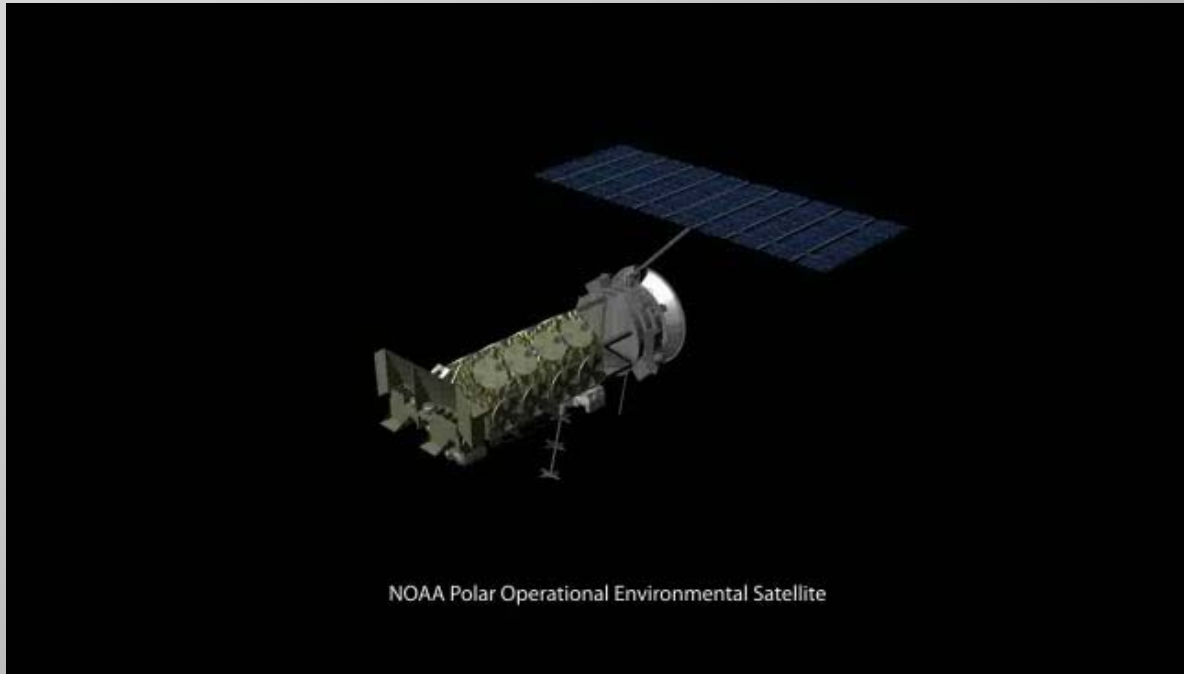


- Smithsonian Ocean Hall and Baltimore Aquarium
- Science on a Sphere exhibits
- Natural Disasters
- Eco-Zone traveling exhibit
- Kiosks
- [Magic Planet](#)
- Posters





Major Activities: Supporting NOAA's Mission



NOAA Polar Operational Environmental Satellite

JCSDA

ROLE OF DATA ASSIMILATION

- Observations
- Quality Assurance
- Environmental Data
- Environmental Parameters

THE FUTURE OF DATA ASSIMILATION AT JCSDA

JCSDA Roadmap

THE JOINT CENTER FOR SATELLITE DATA ASSIMILATION

NASA, NOAA, and other agency logos.

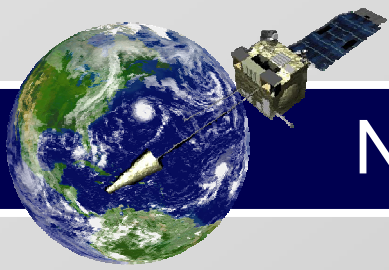
NOAA SATELLITE AND INFORMATION SERVICE

Hurricane Season 2005

NOAA logo.

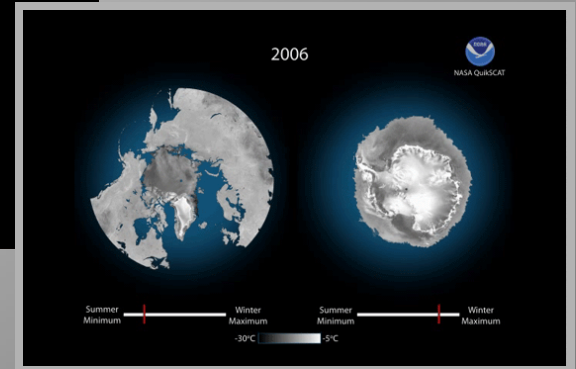
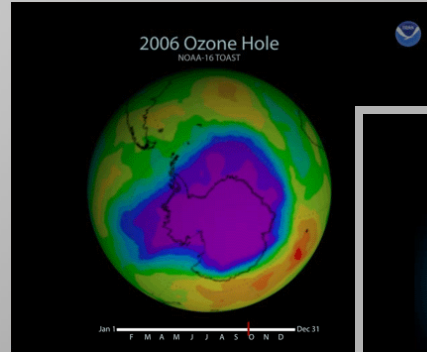
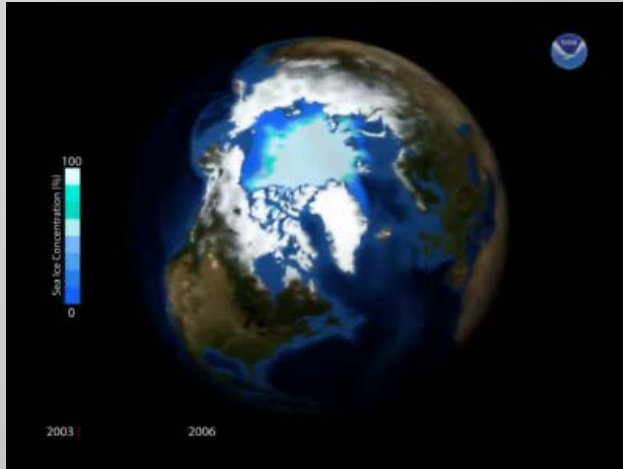
NOAA Satellite and Information Service Annual Report

NOAA logo.



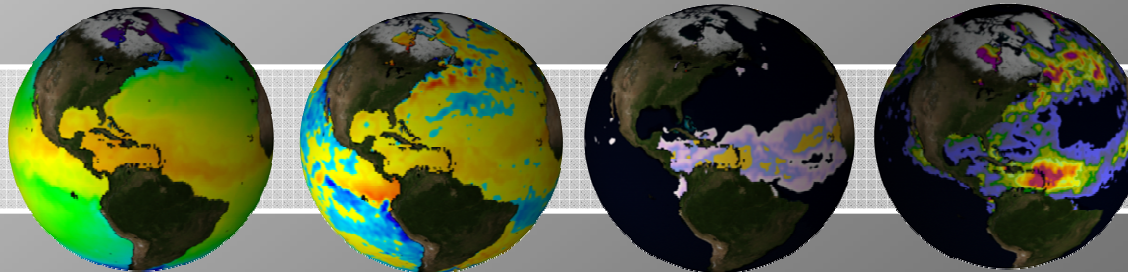
NOAA Outreach Priorities

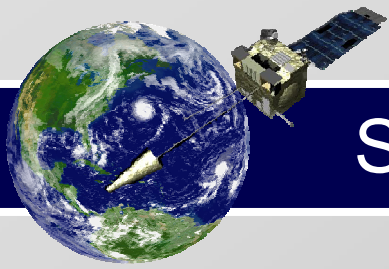
International Polar Year (2007-2008)



Year of the Reef (2008)

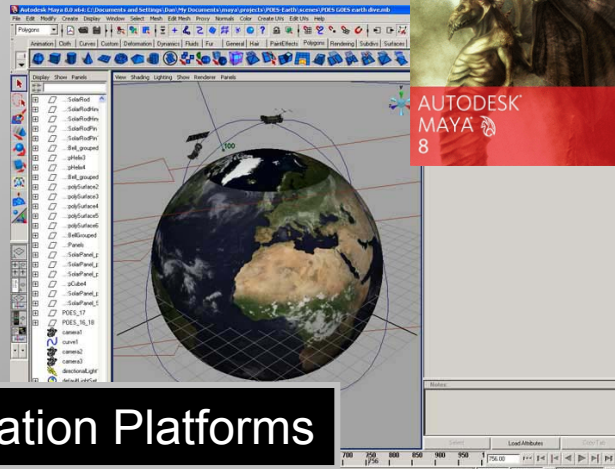
CRW
OEd



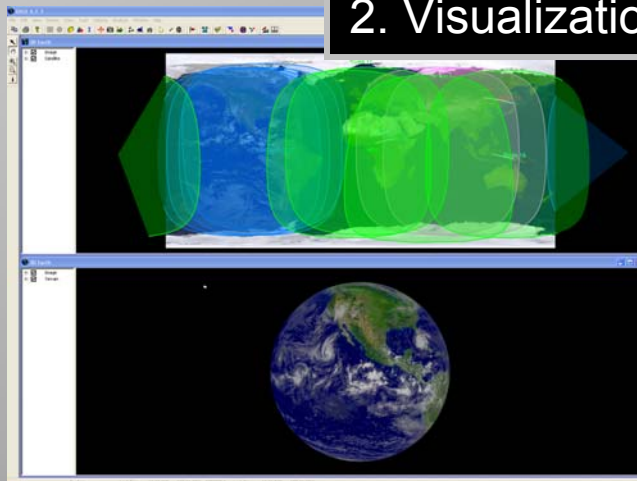


STAR Collaboration: What it Takes

1. Data Manipulation



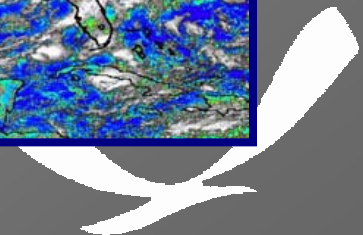
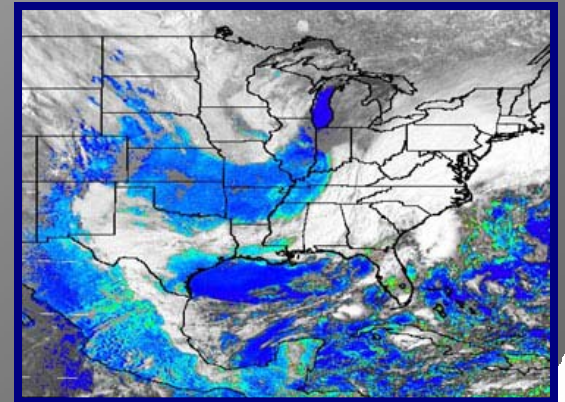
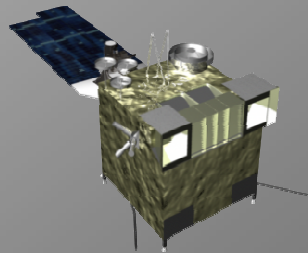
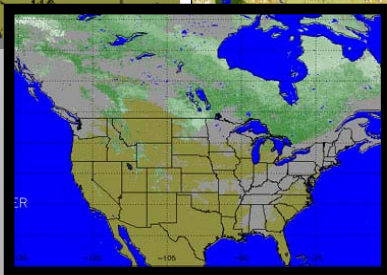
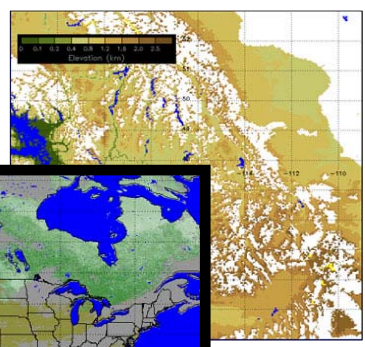
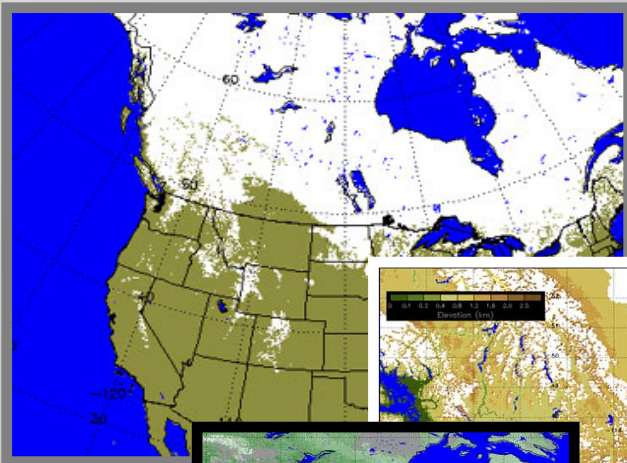
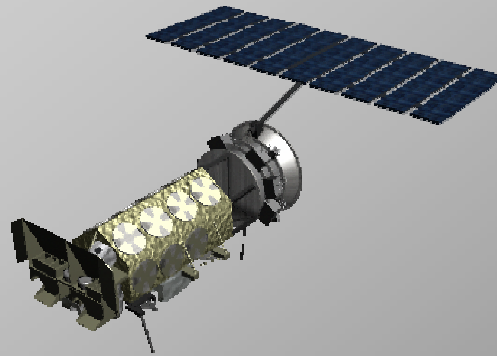
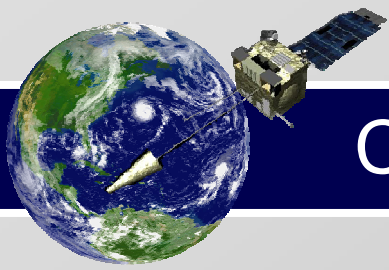
2. Visualization Platforms

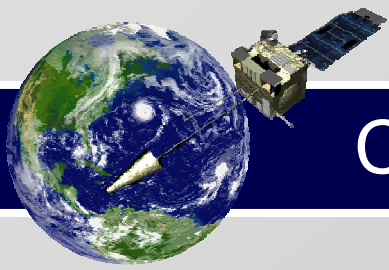


3. Post-Production

Demos

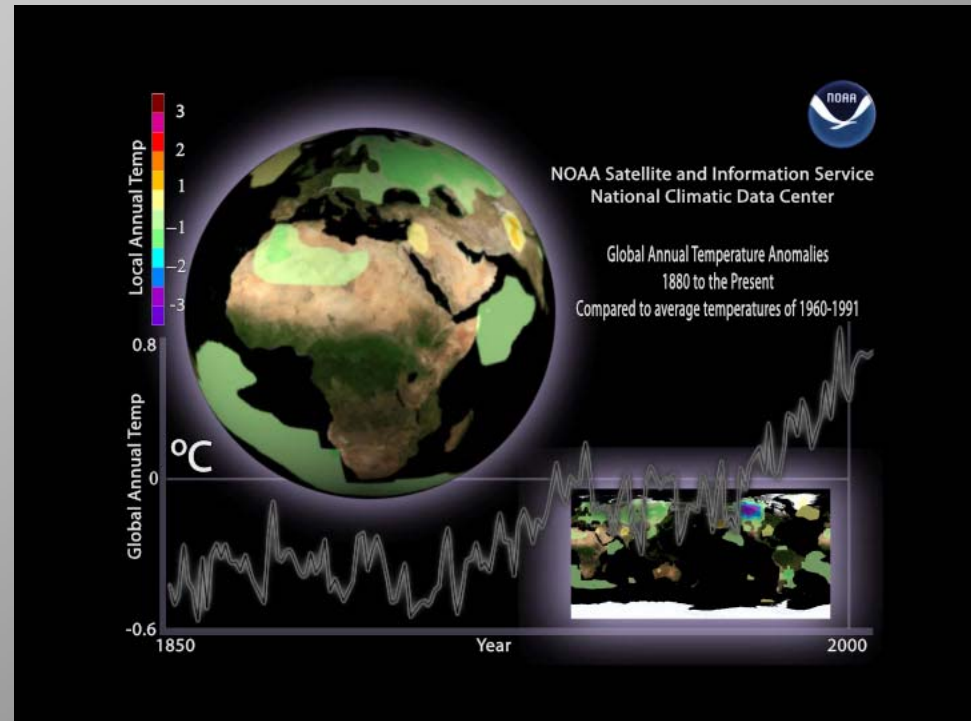
Collaboration: Diversifying the 'Catalog'

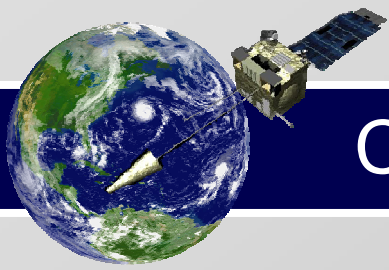




Collaboration: Long-Term Time Series

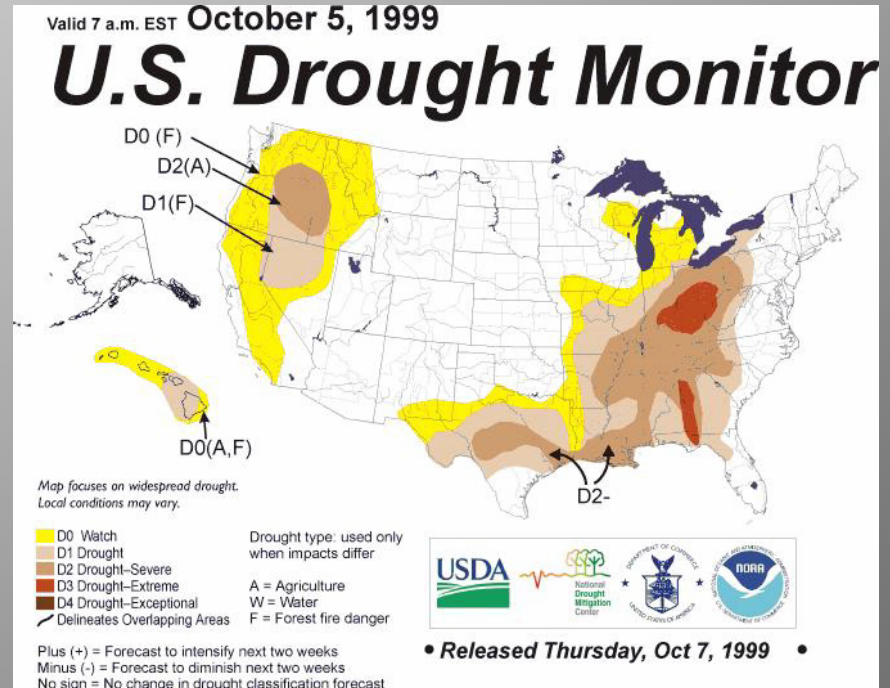
- Consistent maps and layouts
- Consistent color schemes

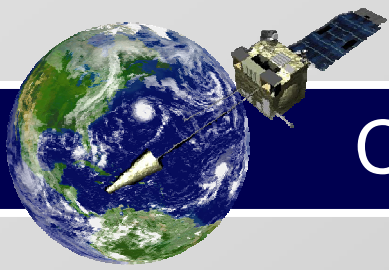




Collaboration: Long-Term Time Series

- Consistent maps and layouts
- Consistent color schemes





Collaboration: Timely Communication

Ocean Hall: 7,300 Project Hours

IPY Materials: 80 Project Hours

Flash Floods: 8 Project Hours

