



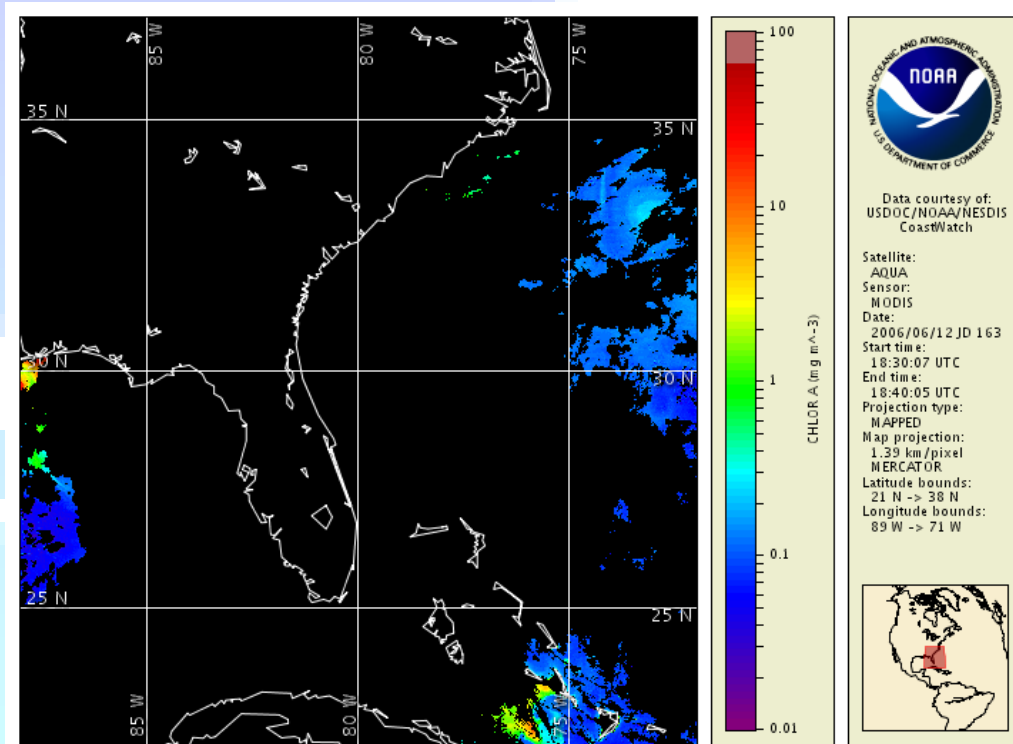
NOAA's First Operational Satellite Ocean Color Products

On 12 June 2006, NESDIS OSDPD initiated operational processing and distribution of SeaWiFS* and MODIS-Aqua* ocean color products for coastal US waters:

- *Chlorophyll concentrations & anomalies*
- *Remote sensing reflectances & anomalies*
- *Normalized water-leaving radiances*

Uses & Applications:

- *Harmful algal bloom detection & monitoring*
- *Water quality assessment*
- *Fisheries habitat characterization*



MODIS-Aqua* derived image of chlorophyll concentration in southwest US coastal waters on 12 June 2006 generated operationally by NOAA. Clouds obscure much of the area around Florida on this day.

* MODIS-Aqua and SeaWiFS data are acquired from NASA and GeoEye, respectively.