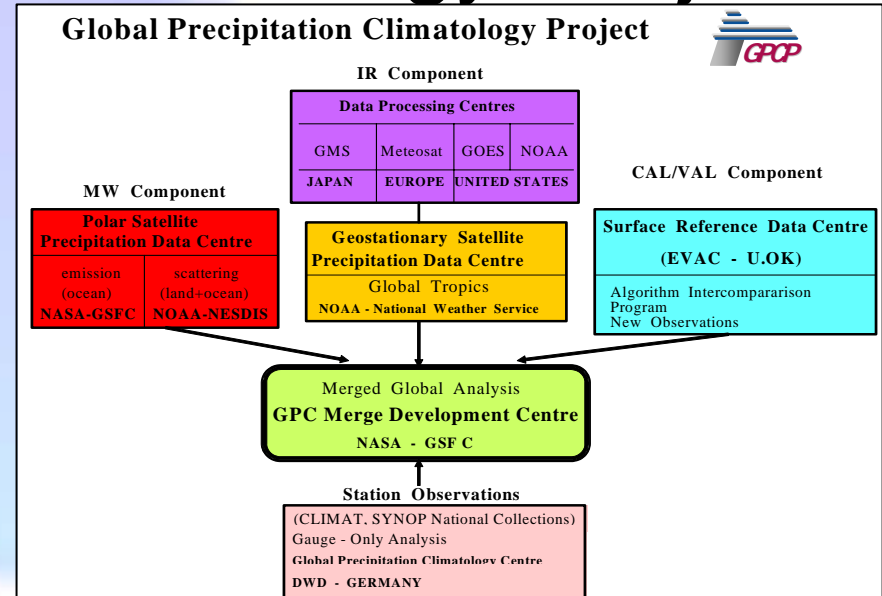


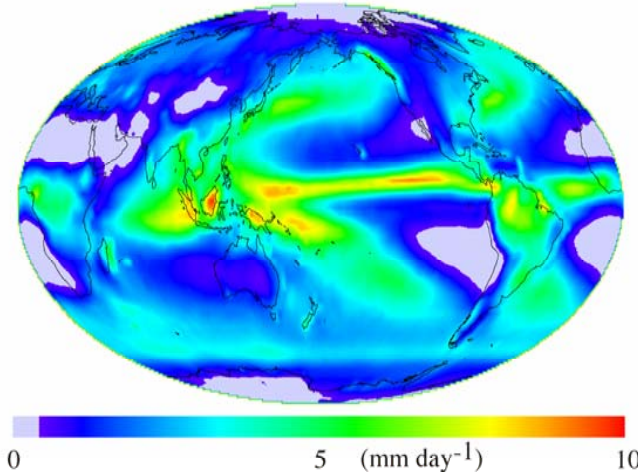


Global Precipitation Climatology Project

- GPCP is a project that is part of the WCRP/GEWEX program
 - Comprises of various “centers”, several of which are NOAA/Climate Program supported
- Current product suite (1979 – 2007)
 - Monthly mean 2.5°x2.5° latitude/longitude
 - Merged satellite and gauge, error estimates
 - Satellite components: microwave and infrared estimates, error estimates
 - Gauge analysis, error estimates
 - Intermediate analysis products, e.g., merged satellite estimates
 - Daily 1 x 1 degree, Pentad



The Global Precipitation Climatology Project (GPCP)



A 25-Year Precipitation Climatology (1979-2003)
Based on Observations from Multiple Satellites