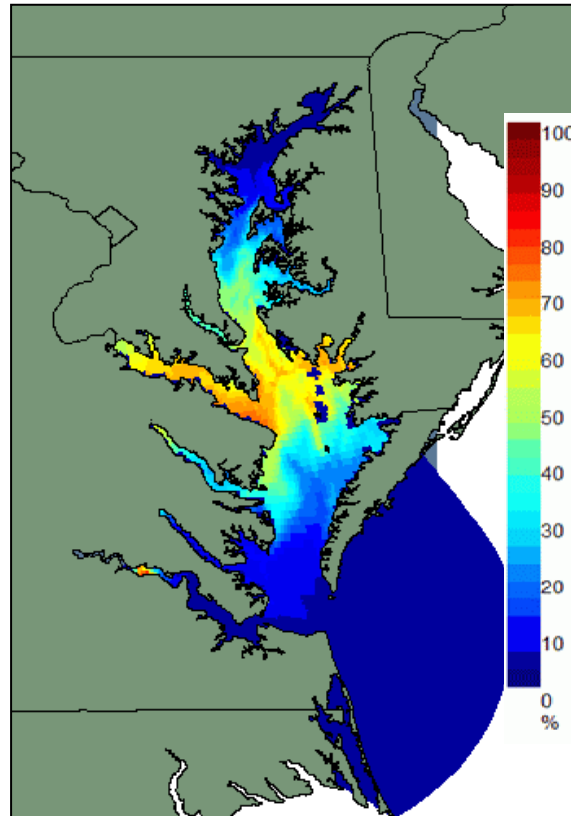
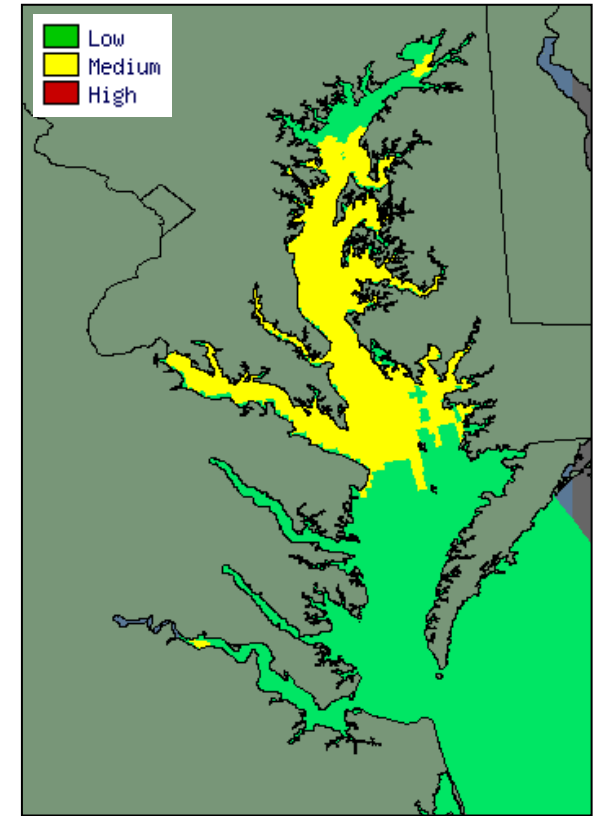


Ecological Prediction in Chesapeake Bay

- Currently generate daily nowcasts of sea nettles (*Chrysaora quinquecirrha*) and the harmful algal bloom *Karlodinium veneficum* in Chesapeake Bay
- Identify the geographic locations where ambient conditions coincide with the preferred environment (= habitat) of the organism
- Disseminate nowcasts on WWW sites with on-line mapping capability
- Transitioned to NOAA Chesapeake Bay Office



Predicted chance of encountering sea nettle, *C. quinquecirrha*, on August 17, 2007



Predicted relative abundance of *Karlodinium veneficum* on August 17, 2007