



# GREENLAND COMMAND



GRØNLANDS KOMMANDO

**3rd Symposium on the Impact of  
an Ice-diminishing Arctic on  
Naval & Maritime Operations.**

**PRESENT AND FUTURE  
CHALLENGES**

Jan Boegsted  
Commander S.G.  
Chief of Staff  
Greenland Command



# MAIN TASKS



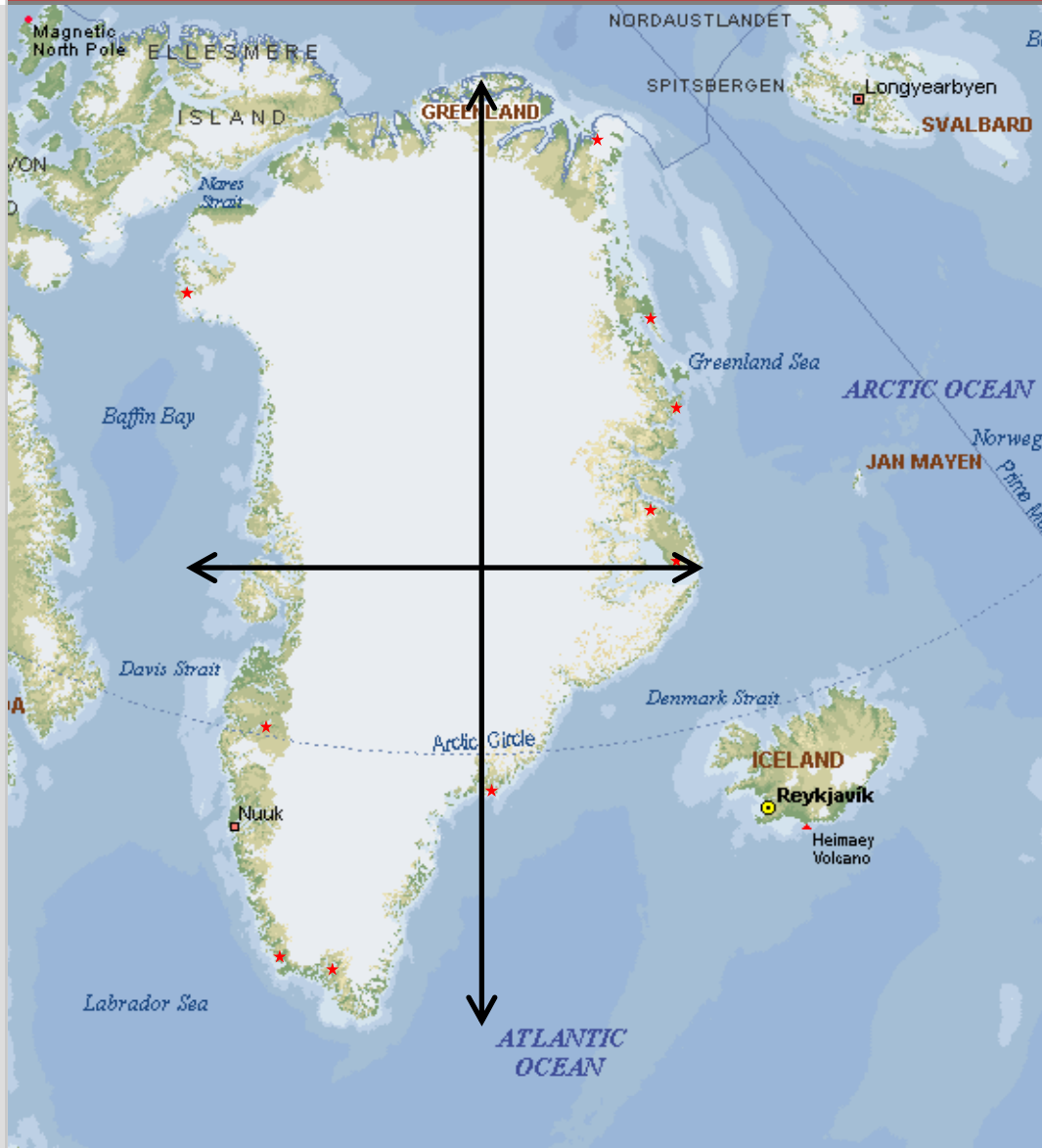
GRØNLANDS KOMMANDO

- 1. The military defence of Greenland.**
- 2. Area surveillance. Maintain sovereignty of Greenland land-, sea- and air territory.**
- 3. Operate Maritime Rescue Co-ordination Centre. Conduct maritime SAR operations.**
- 4. Fishery inspection/protection inside the Greenland Fishery Zone (200 NM).**
- 5. Maritime environmental surveillance & enforcement and maritime pollution control outside territorial waters (3 NM).**
- 6. Control Greenland Vessel Safety System (GREENPOS) and Navigational Safety Message System (NAVTEX).**
- 7. Conduct Hydrographics Survey and support to research institutions.**
- 8. Support the civilian communities in Greenland (MEDEVAC, Icebreaking, supply)**



# CONDITIONS/FACTORS

GRØNLANDS KOMMANDO



## FACTS:

**NORTH/SOUTH: 2.670 KM**

**EAST/WEST: 1.200 KM**

**TOTAL: 2.186.000 KM<sup>2</sup>**

**COAST LINE: 39,330 KM**

## EEZ/GFZ:

**WEST COAST: 230.000 SM<sup>2</sup>**

**EAST COAST : 240.000 SM<sup>2</sup>**

**NORTH COAST: 145.000 SM<sup>2</sup>**

**TERRITORIAL BORDER:  
3 SM**

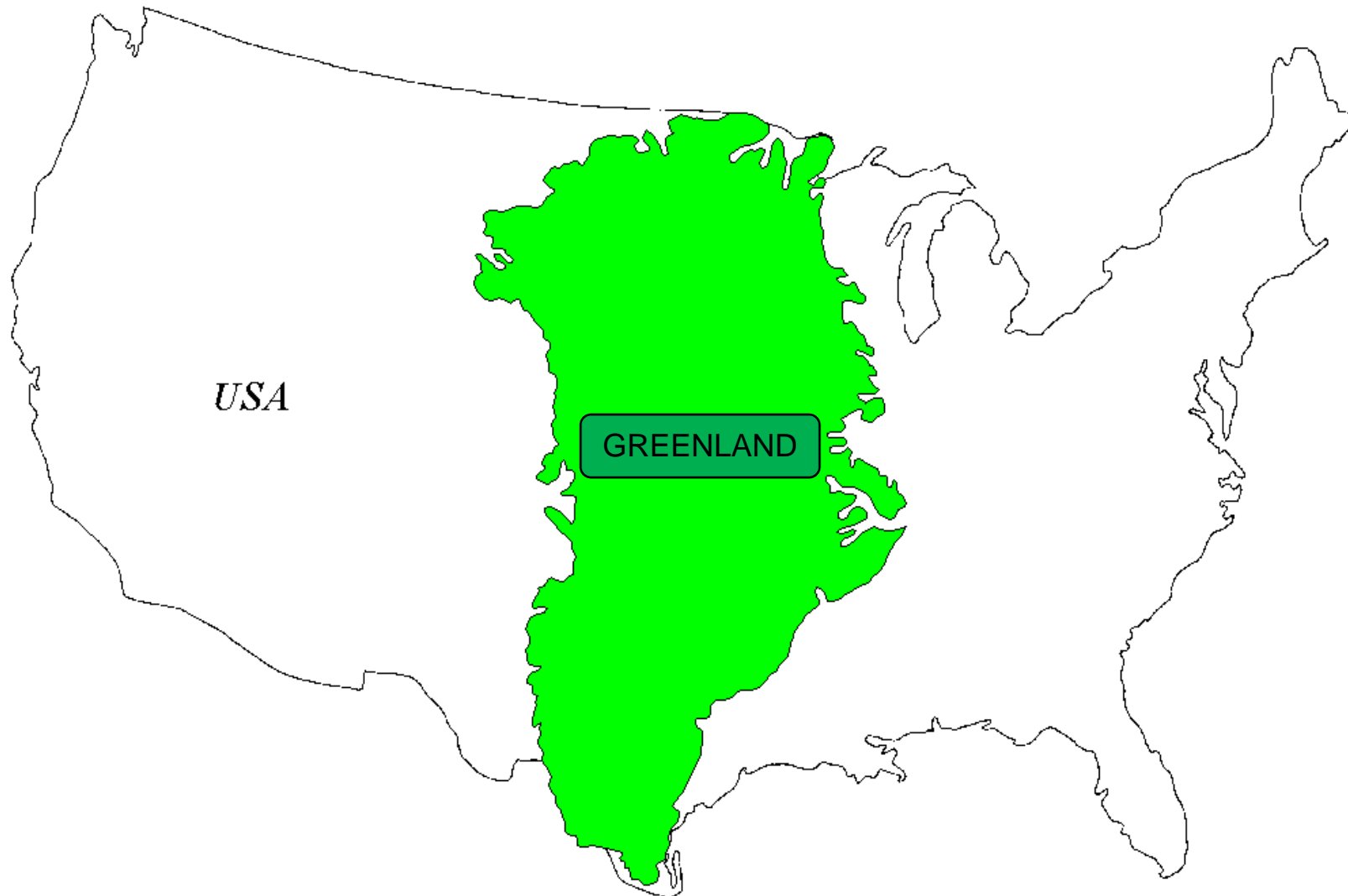
**EEZ/GFZ:  
200 SM**



# CONDITIONS/FACTORS



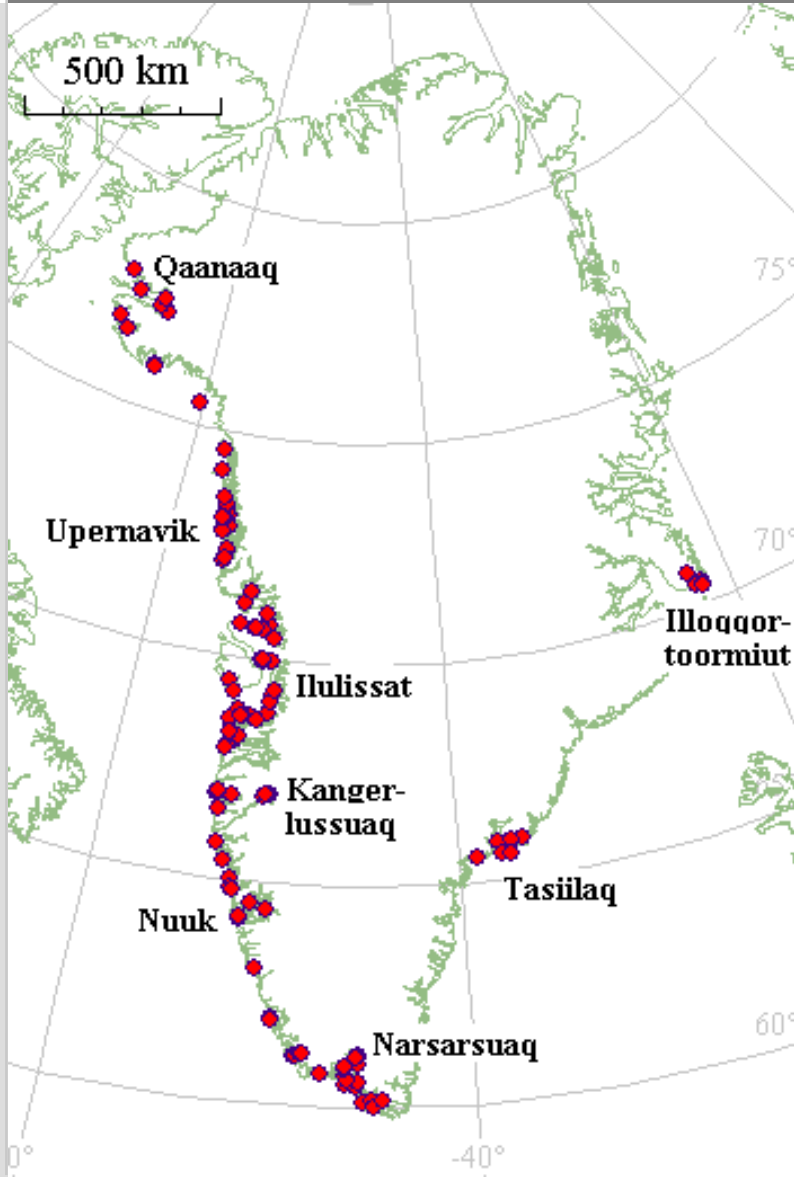
GRØNLANDS KOMMANDO





# CONDITIONS/FACTORS

GRØNLANDS KOMMANDO



## POPULATION

**Population: 57.000**

**Native: 47.000**

**West coast: 85%**

**Nuuk (capital): 16.000**

**Rest in 16 towns and 60 settlements**

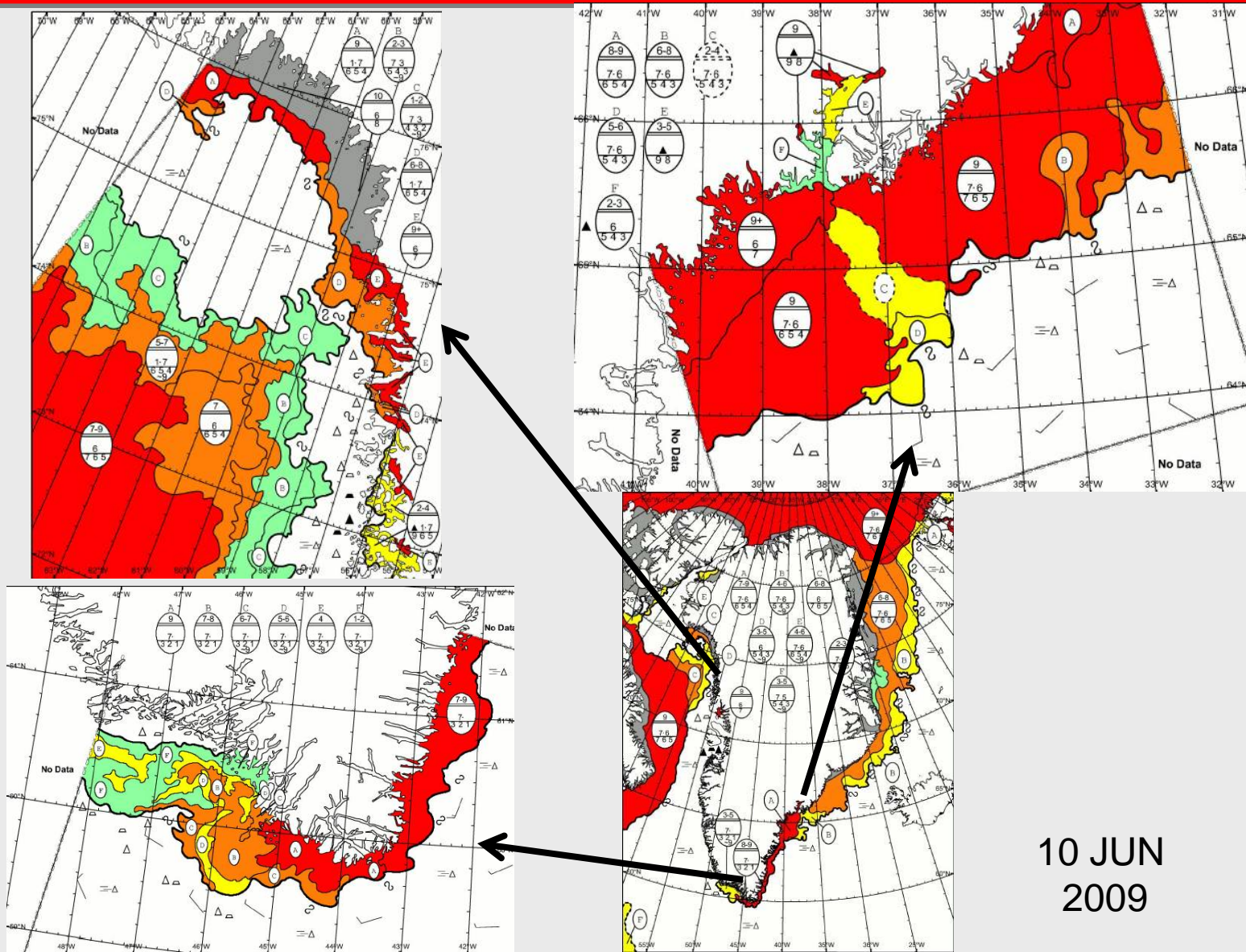




# CURRENT ICECHART



GRØNLANDS KOMMANDO



10 JUN  
2009



# MILITARY PRESENCE IN GREENLAND



GRØNLANDS KOMMANDO



Patrol and transport aircrafts

Air Group West at Kangerlussuaq Airport



GREENLAND COMMAND Head Quarter.



Station Nord Air strip

Liaison Officer Thule Air Base

SIRIUS – Dog Sledge Patrol

Mestersvig (Air strip)



Inspection ships, vessels and cutter

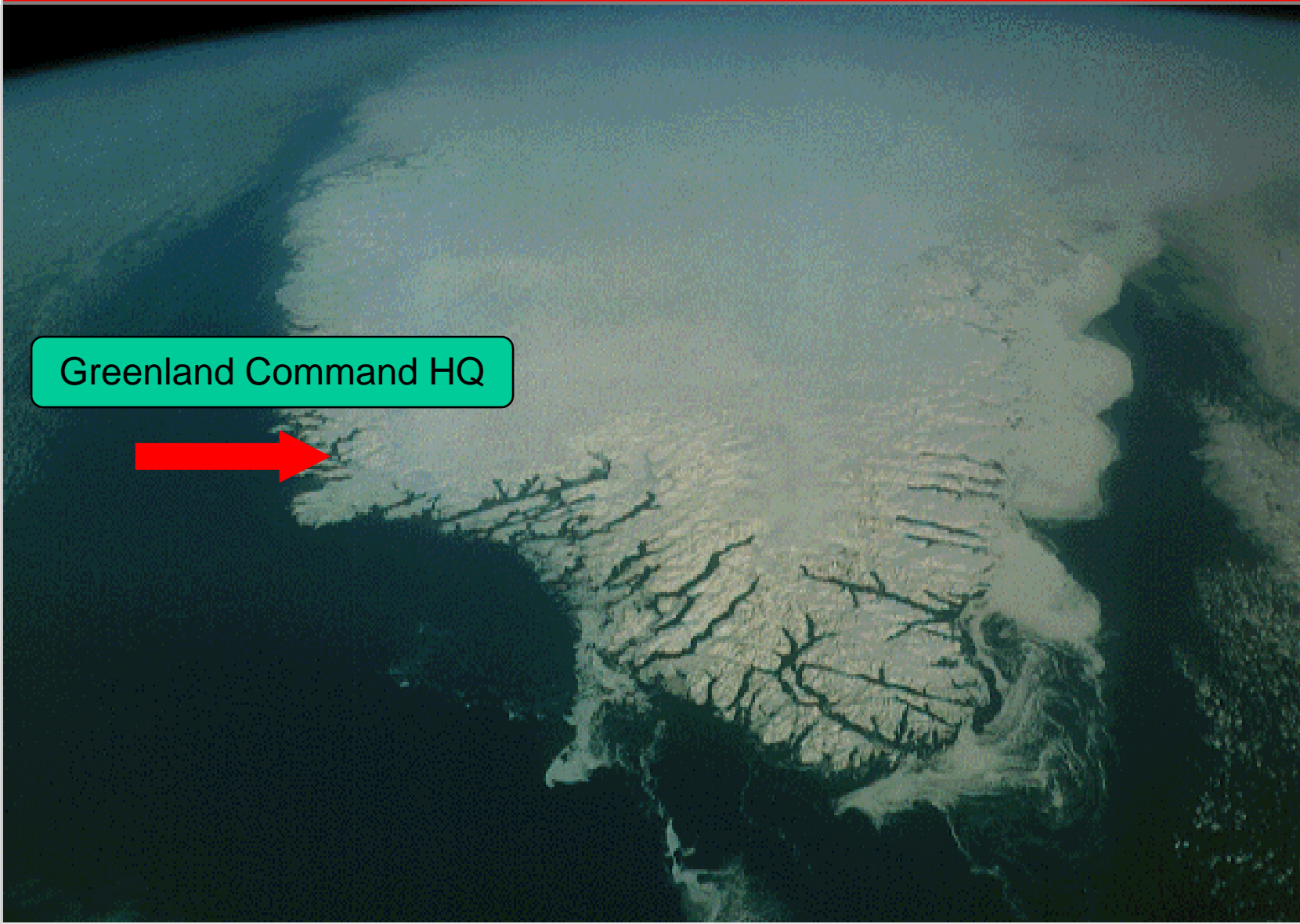




# GREENLAND COMMAND



GRØNLANDS KOMMANDO



Greenland Command HQ



# GREENLAND COMMAND



GRØNLANDS KOMMANDO





# HISTORY



GRØNLANDS KOMMANDO

**On the 1st of August 1951 the previous Greenland Naval Command located in Nuuk changed to a Joint Command and assumed the name of Island Commander Greenland (NATO term). Today Greenland Command.**

**On the 10th of August 1951 the Danish armed forces agreed to take over the US Naval Base at Groennedal and the Headquarters of Island Commander Greenland was established here.**



# SEARCH AND RESCUE



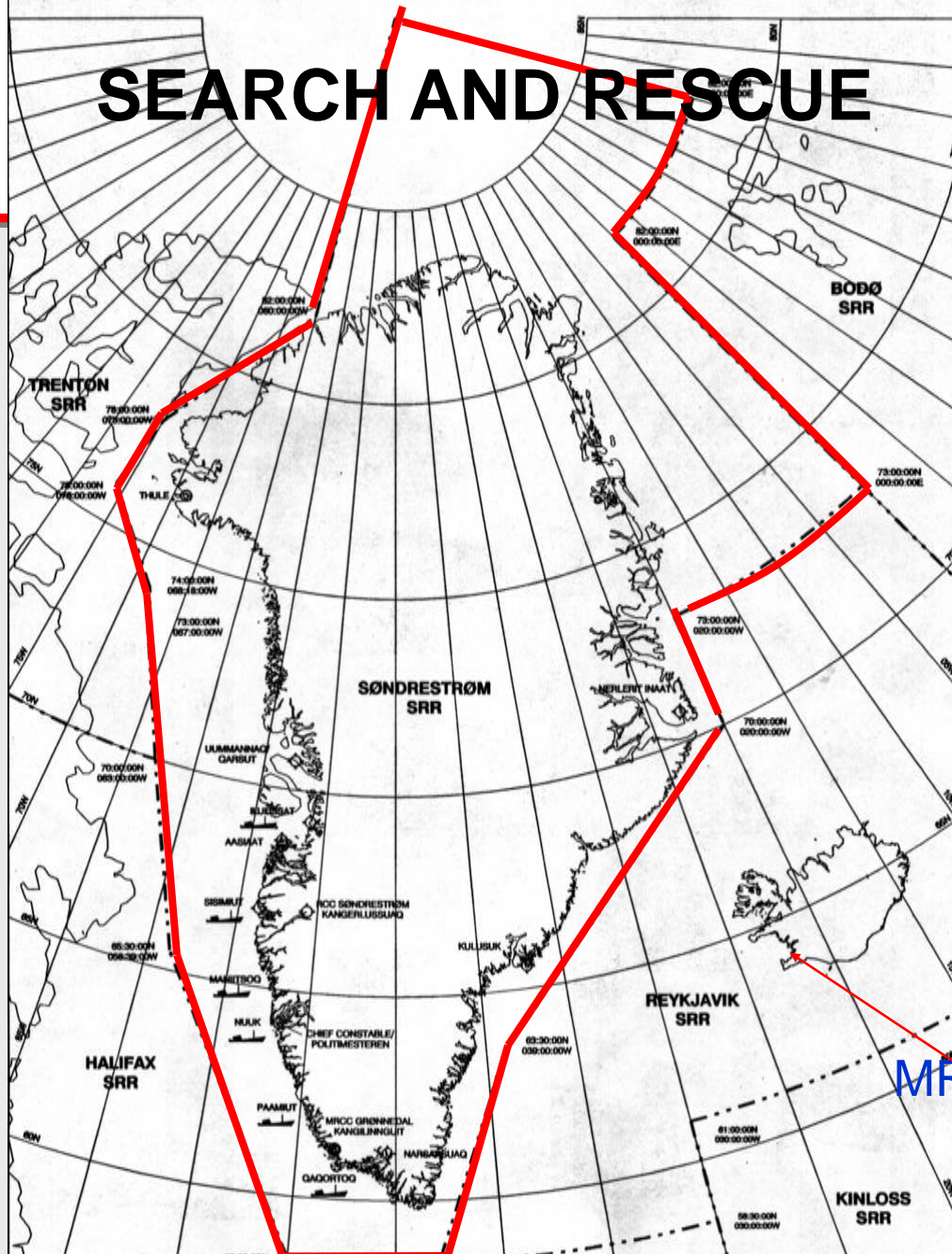
GRØNLANDS KOMMANDO

**GREENLAND COMMAND is the MRCC (Maritime Rescue Coordination Centre) for the Greenlandic SRR. Immediately available rescue assets are units under Greenland Command OPCON. These assets may be supported by civilian vessels and aircraft in the area.**

**GREENLAND COMMAND is also responsible for the ship reporting system in Greenland (GREENPOS), facilitating an updated picture of maritime traffic around Greenland.**



# SEARCH AND RESCUE



GRØNLANDS KOMMANDO

RCC TRENTON

RCC BODØ

RCC HALIFAX

MRCC REYKJAVIK

SEARCH AND RESCUE REGION GREENLAND



# FISHERY INSPECTION AND PROTECTION



## OVERALL AIM

Conduct fishery inspection and control to such a level that illegal fishing activities inside the Greenland Fishery Zone (GFZ) cannot be carried out systematically or undetected over time

Furthermore to ensure that established violations are stopped, registered and proved by means that will support a later prosecution in court.





# CHALLENGES



## **Native population**

### **Nabours**

- Norway
- Iceland
- Canada

### **Other (safety at sea)**

- Cruise ships
- Exploration ships
- Diminishing ice



# CRUISE SHIPS



GRØNLANDS KOMMANDO



Grand Princess – 4200 PAX

Ocean Nova  
Antarctic 2009





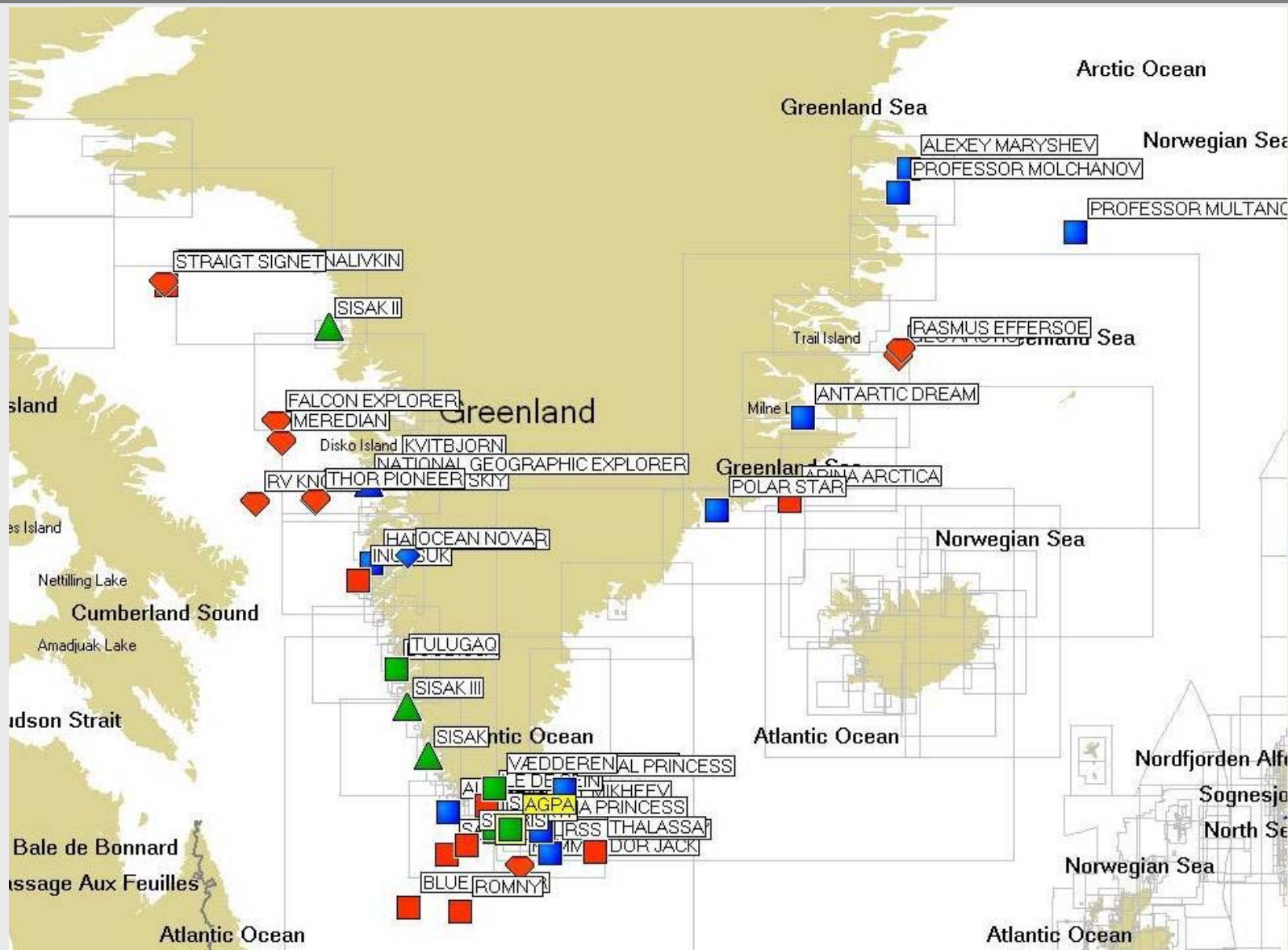


# SHIP'S TRAFFIC

(snapshot 18 SEP 2008)



GRØNLANDS KOMMANDO





# QUESTIONS ?

