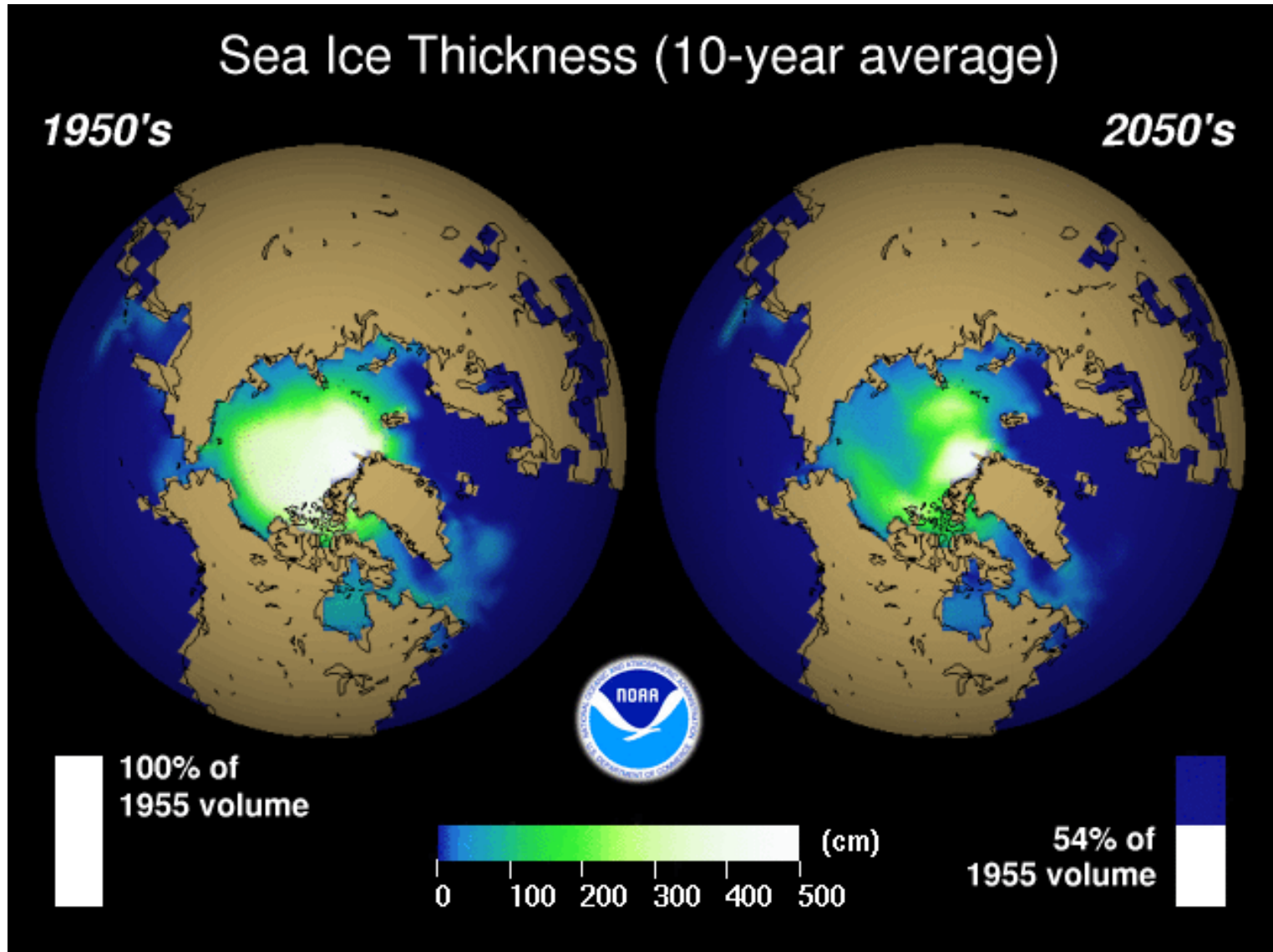


A large, flat-topped iceberg floats in the foreground of a dark, choppy sea. The sky is filled with heavy, grey clouds, creating a somber and dramatic atmosphere. The water around the iceberg is a deep, dark blue-green color. In the distance, the horizon is visible with several smaller ice floes scattered across the water.

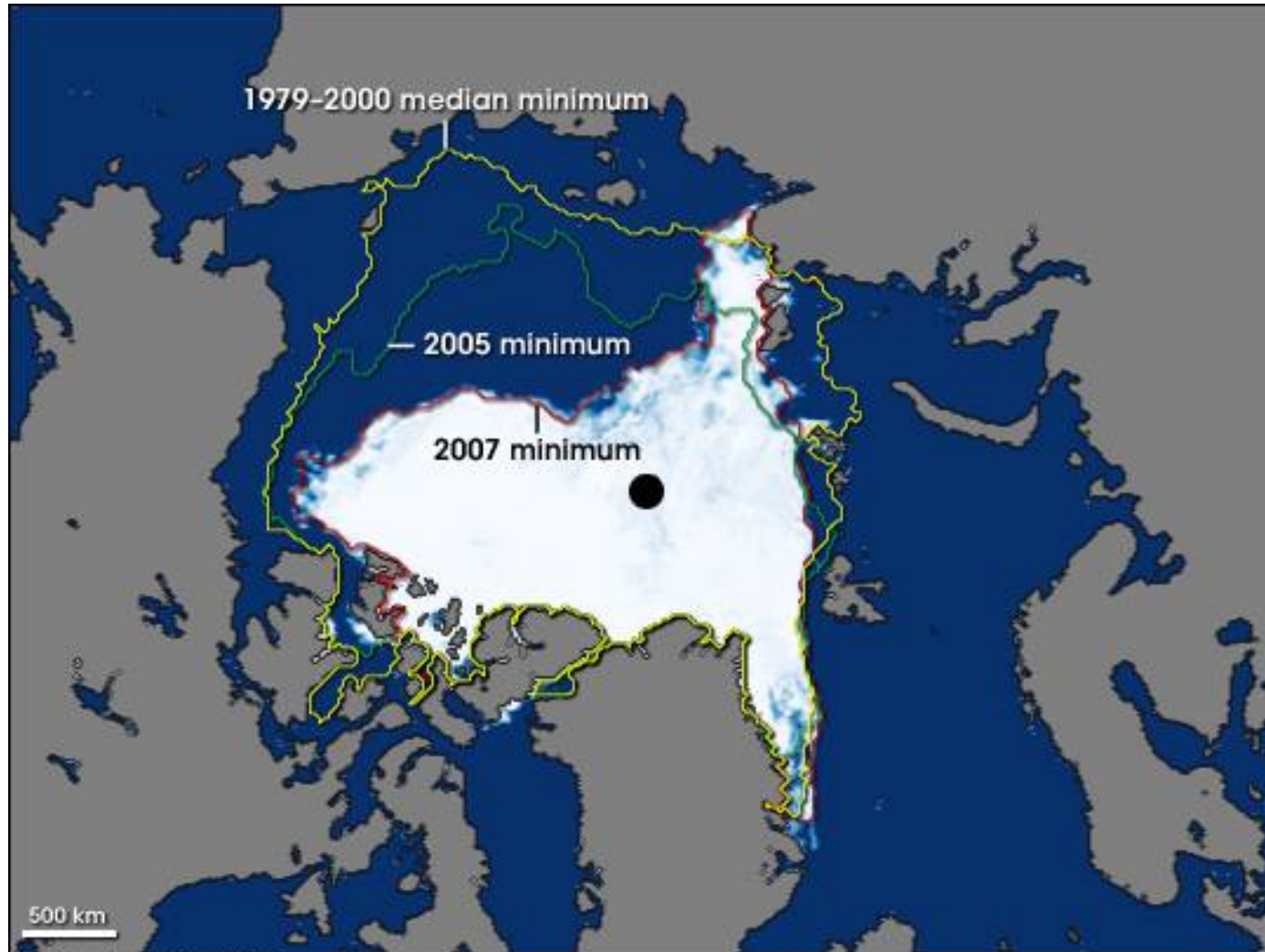
The Emerging Arctic Security on the Last Frontier



MORE WATER – MORE COAST GUARD RESPONSIBILITIES



MORE WATER – MORE COAST GUARD RESPONSIBILITIES



September 16, 2007

Sea Ice Concentration (percent)



INCREASED ARCTIC ACTIVITY



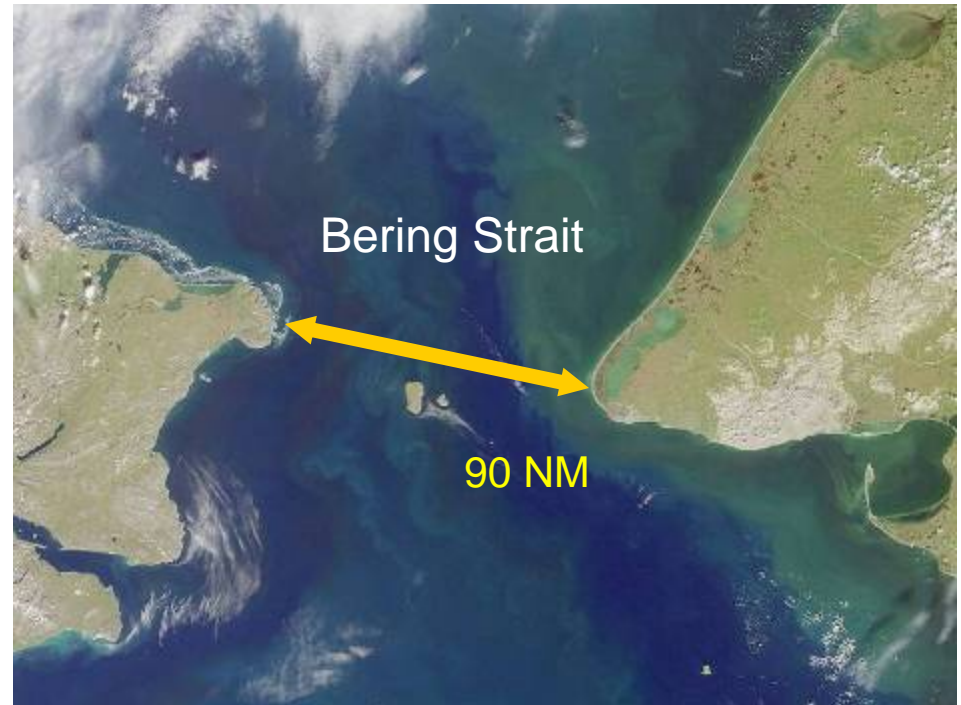
SHIPPING CHALLENGES



National Security

Bering Strait Summer Transits 2008

- **Bering Strait transits on the U.S. side**
~73 vessels with ~104 transits through
(mostly research vessels)
- **Kivalina/Red Dog Mine**
~ 30 round trips
(bulk carriers & tugs)
- **Russian transits**
30+ vessels with over 80 transits
(mostly cargo carriers)
- **Total Bering Strait transits**
130+ vessels making over 245 transits.



Environmental Security



M/V Selendang Ayu



M/V Sea bulk Pride



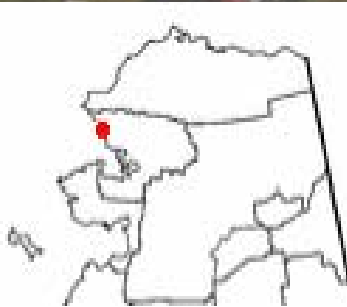
Endangered Species



M/S Explorer

Coastal Erosion

Loss of protection from Fall storms



Kivalina



Shishmaref

TESTING CAPABILITIES



Salliq: Lessons Learned

- **Infrastructure Insufficient**
- **Lack of effective communication**
- **Small boats/short range helos ineffective**
- **Require icebreakers or ice hardened vessels with embarked helos**
- **Input from indigenous people imperative**



LOGISTICAL CHALLENGES



OUTREACH TO LOCAL COMMUNITIES



FEDERAL OUTREACH



HEALY IN 1ST YEAR ICE



ICEBREAKER STATUS



Pending Operations

- CGC Polar Sea in Bering/Chukchi Sea Oct-Dec, Feb-April
- Continued ADA flights
- Waterways Analysis



What Keeps Me up at Night

