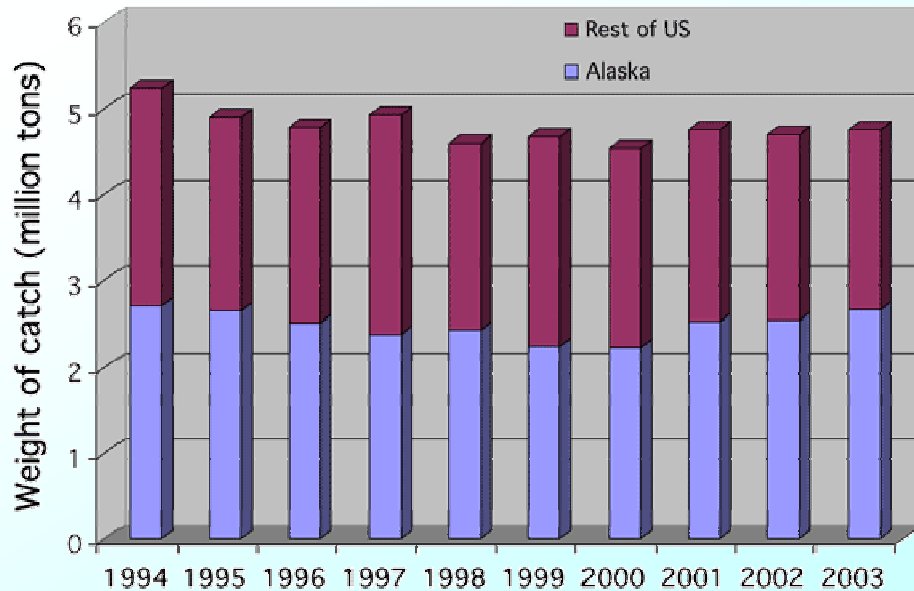


NOAA and Arctic Fisheries

North Pacific Ocean



Commercial importance:

Historically, about half of the nation's catch of seafood, by weight, comes from Alaskan coastal waters. The majority of Alaska's catch is from the southeastern Bering Sea shelf.

Changes in seafood abundance:

In the 1970s, ocean warming associated with regional climate change caused large shifts in the relative abundance of commercially valuable species of fish and shellfish in Alaska.



What will happen to the Bering Sea fishery?

The eastern Bering Sea has warmed dramatically since the beginning of the 21st century. NOAA programs will help advise fishery managers on the changing status of the ecosystem.

NOAA and the Arctic

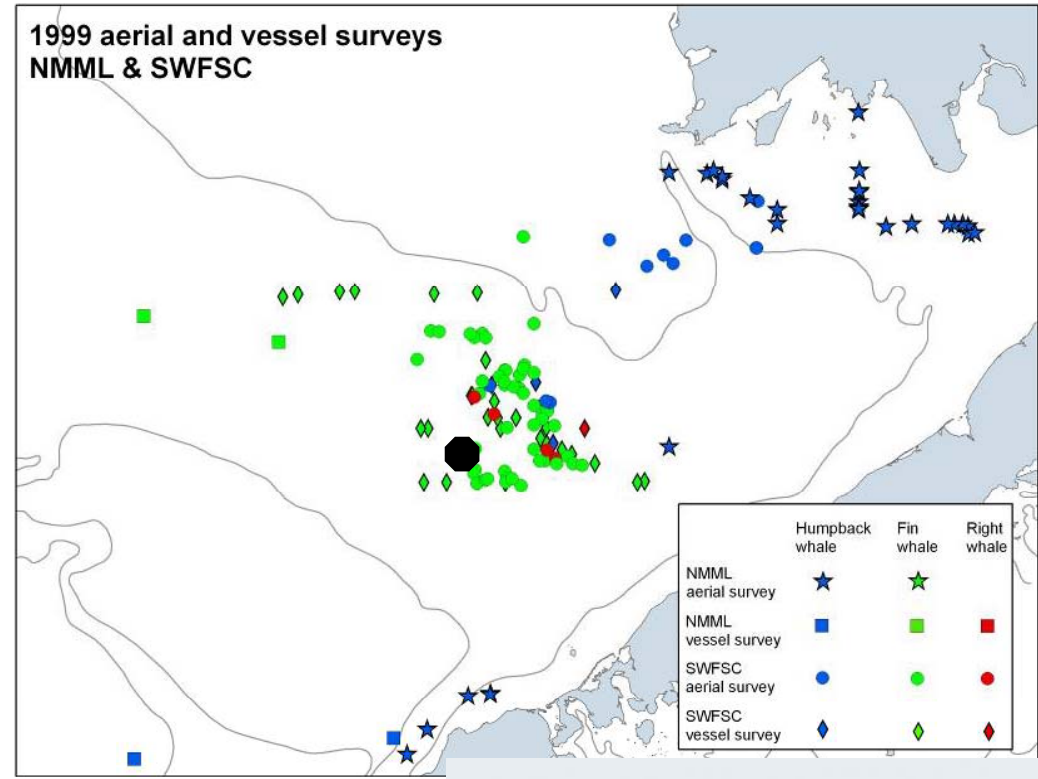
Documented changes in zooplankton biomass and production



2000



2001



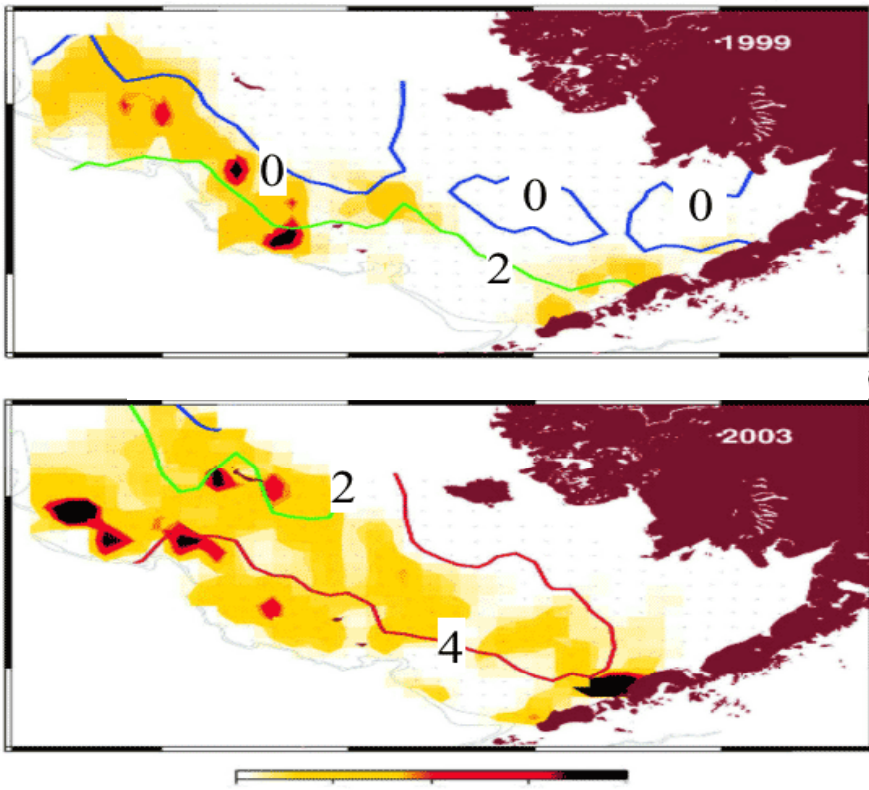
NPCREP Program

The endangered North Pacific Right whale, a planktivore

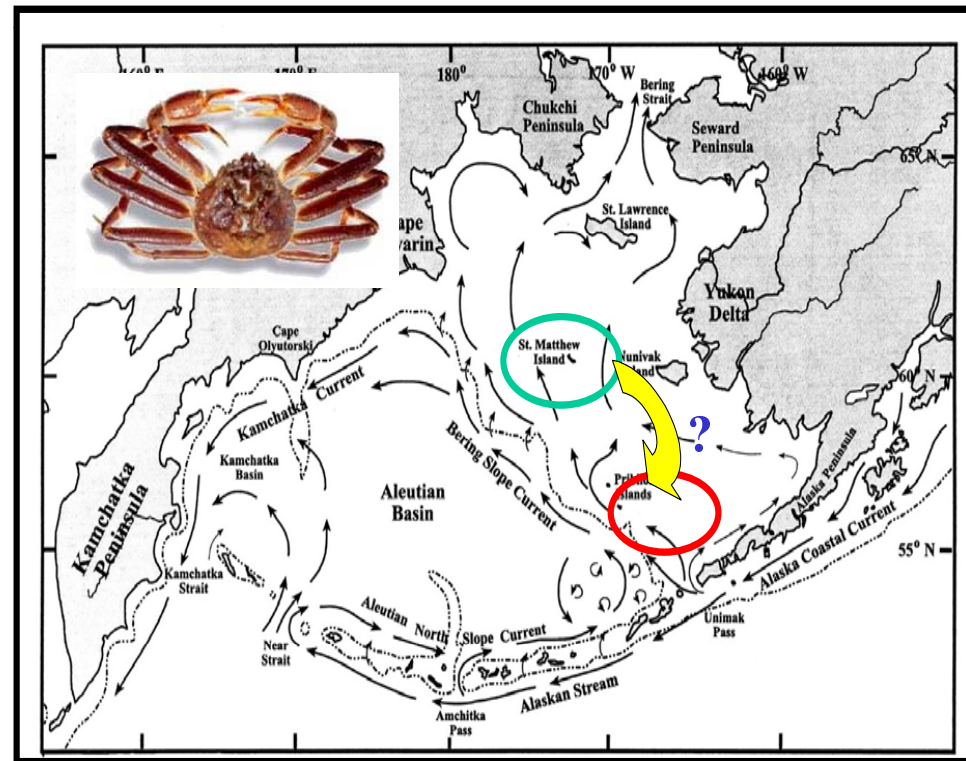


Climate Change & Fisheries

Ocean temperature determines distribution of fish, temperature patterns are changing



Some species have expanded beyond current survey areas and therefore are no longer fully monitored



NOAA's Contributions to International Polar Year



www.ipy.noaa.gov

NOAA Investments in IPY:

FY07 Enacted: \$14.4 million

FY08 Request: \$15.3 million

- 🌐 Including \$308K request for Unmanned Aircraft Systems

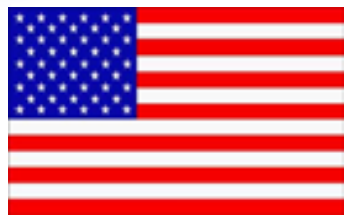
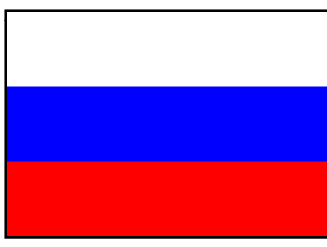
Across the organization, NOAA is contributing to International Polar Year efforts:


- 🌐 Coordinating legacy Arctic EO data sets with other space agencies.
- 🌐 Transitioning existing Cryosphere research coordination under Group on Earth Observations (GEO) banner.
- 🌐 Participating in a ship and P-3 aircraft-based meteorological campaign in partnership with NASA and Sweden.
- 🌐 Continuing work with the Russian-American long term Census of the Arctic



Integrated Earth Observations

Enhanced Information about the Arctic for Society



A large, jagged iceberg floats in the ocean under a clear blue sky. The iceberg is the central focus, with its sharp peaks and textured surface clearly visible. The water is a deep blue, and the sky is a lighter blue. In the distance, other smaller icebergs are visible on the horizon.

Provide the right information,
in the right format,
at the right time,
to the right people,
to make the right decisions.