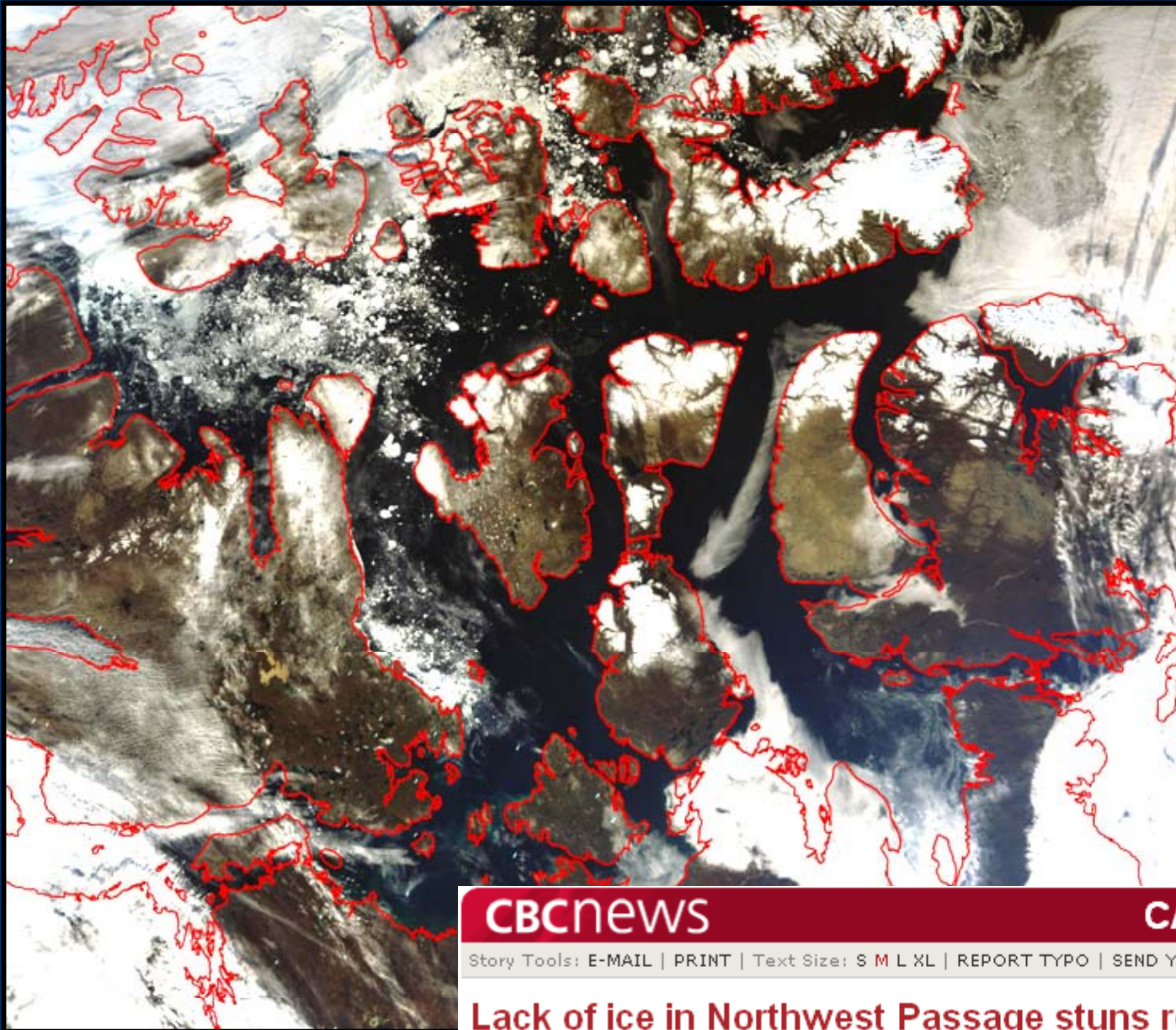


MODIS  
September 24, 2006



**CBCnews**

**CANADA | NORTH**

Story Tools: [E-MAIL](#) | [PRINT](#) | Text Size: [S](#) [M](#) [L](#) [XL](#) | [REPORT TYPO](#) | [SEND YOUR FEEDBACK](#)

## **Lack of ice in Northwest Passage stuns researchers**

Last Updated: Tuesday, October 31, 2006 | 9:52 AM CT

[CBC News](#)

# More Recent Events

Multi-year pack ice with leads

←←← Rapid westward expansion of large leads

Mar 01

Feb 28

Feb 26

Lead

65 km

21-22 km

Ward Hunt  
Ice Shelf

Ward Hunt  
Island

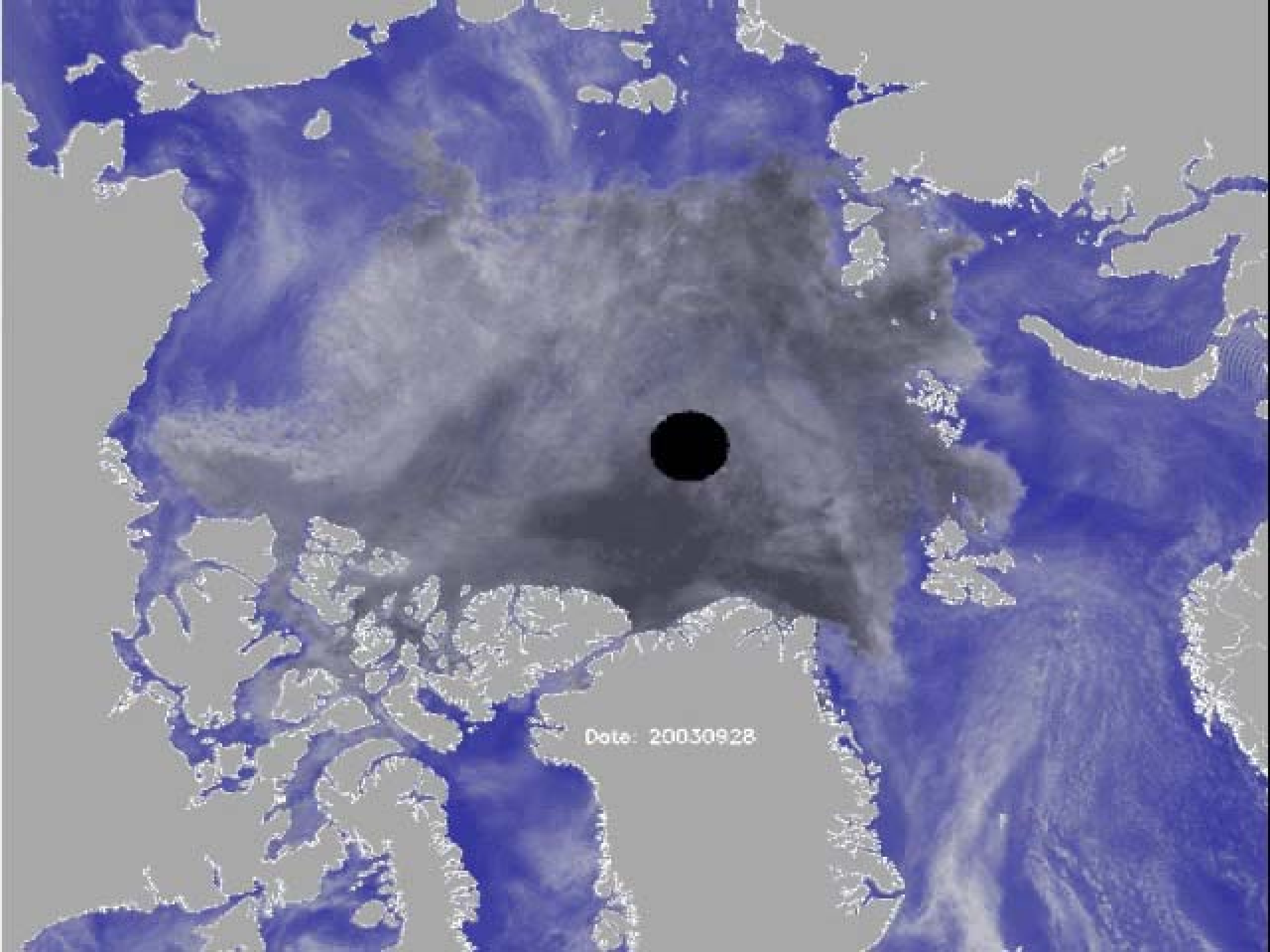


# “EXTREME ICE”

**“Crushing ice imprisons sealing ships  
Coast Guard pushing hard to aid 100 trapped  
vessels, including one of their own”**

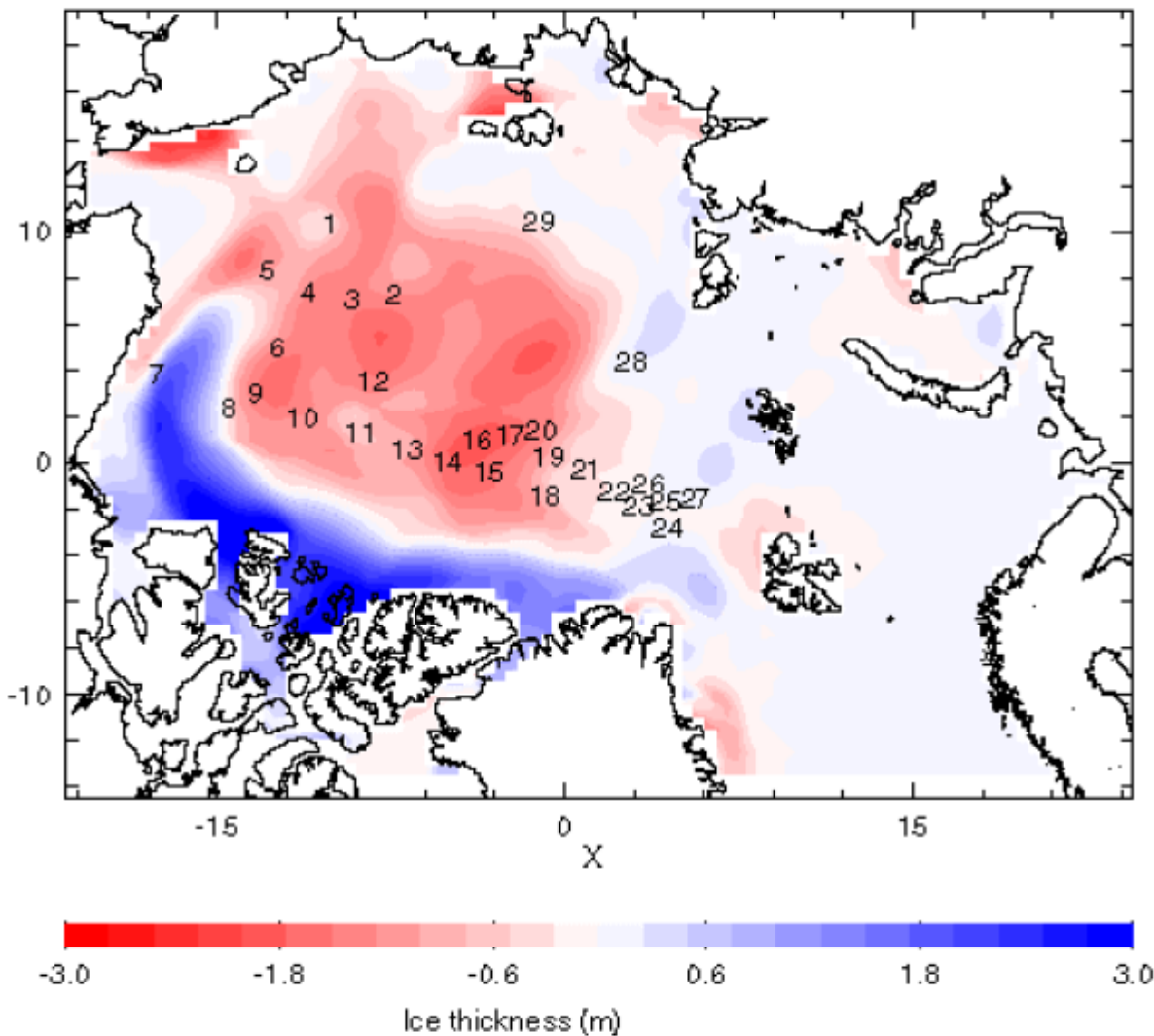
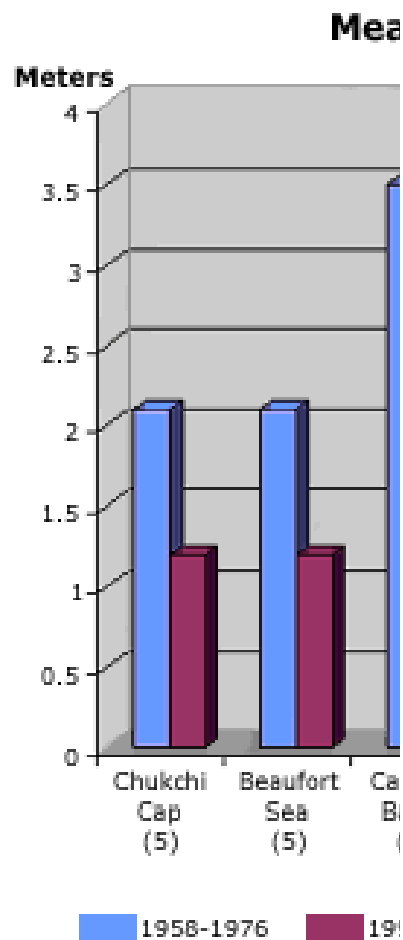
**Supplies low for ice-bound N.L. sealers  
Thursday, April 19, 2007**





Date: 20030928

# *Ice thickness is key, but difficult to observe and sample.*



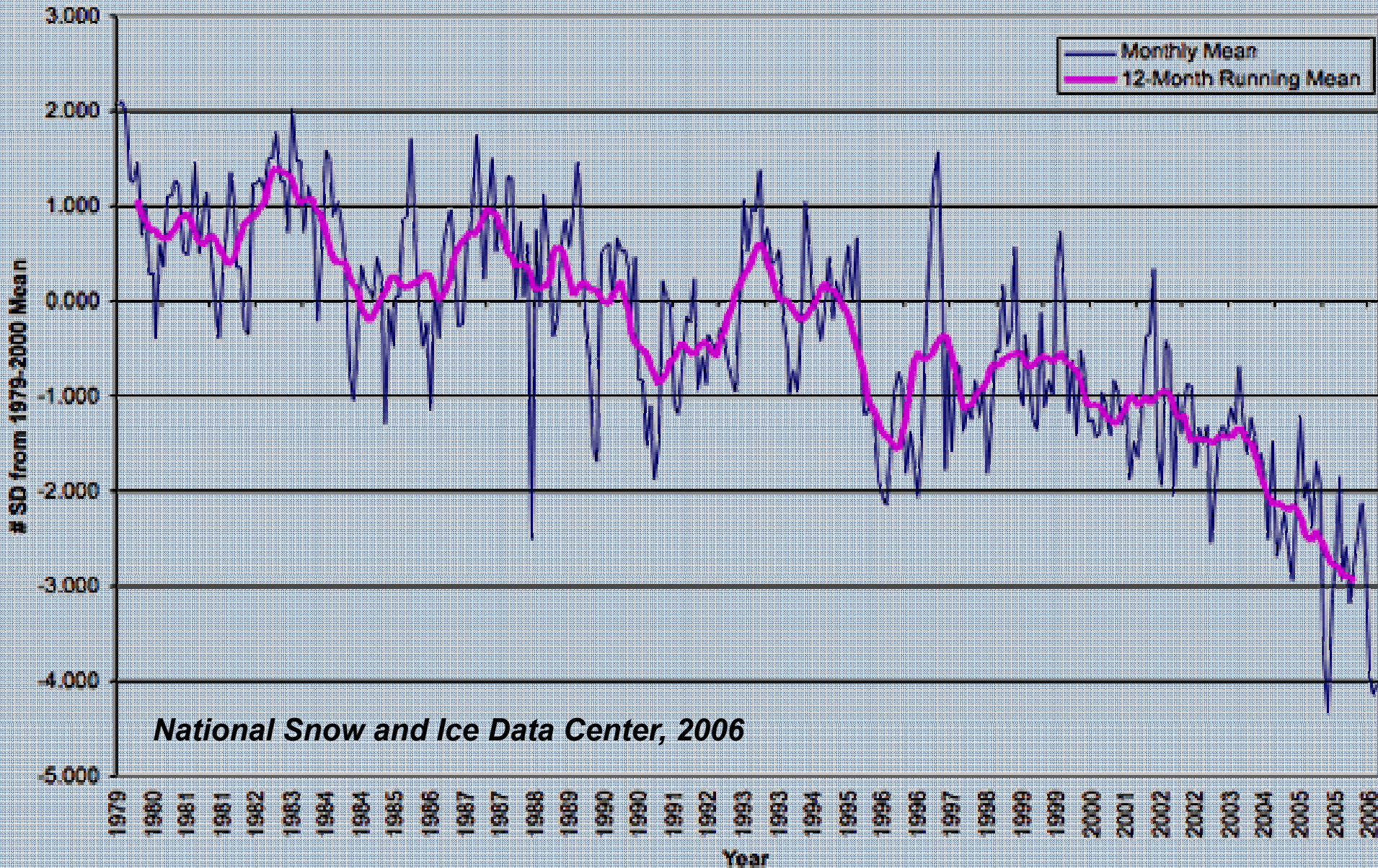
Rothrock et al.: Thinning

Holloway and Sou: Has Arctic Sea Ice Rapidly Thinned? (2001)



# Observed Arctic Sea Ice Extent 1978-2006

Monthly Mean Anomalies Normalized by Monthly 1979-2000 St. Deviation

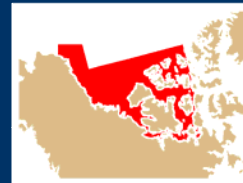
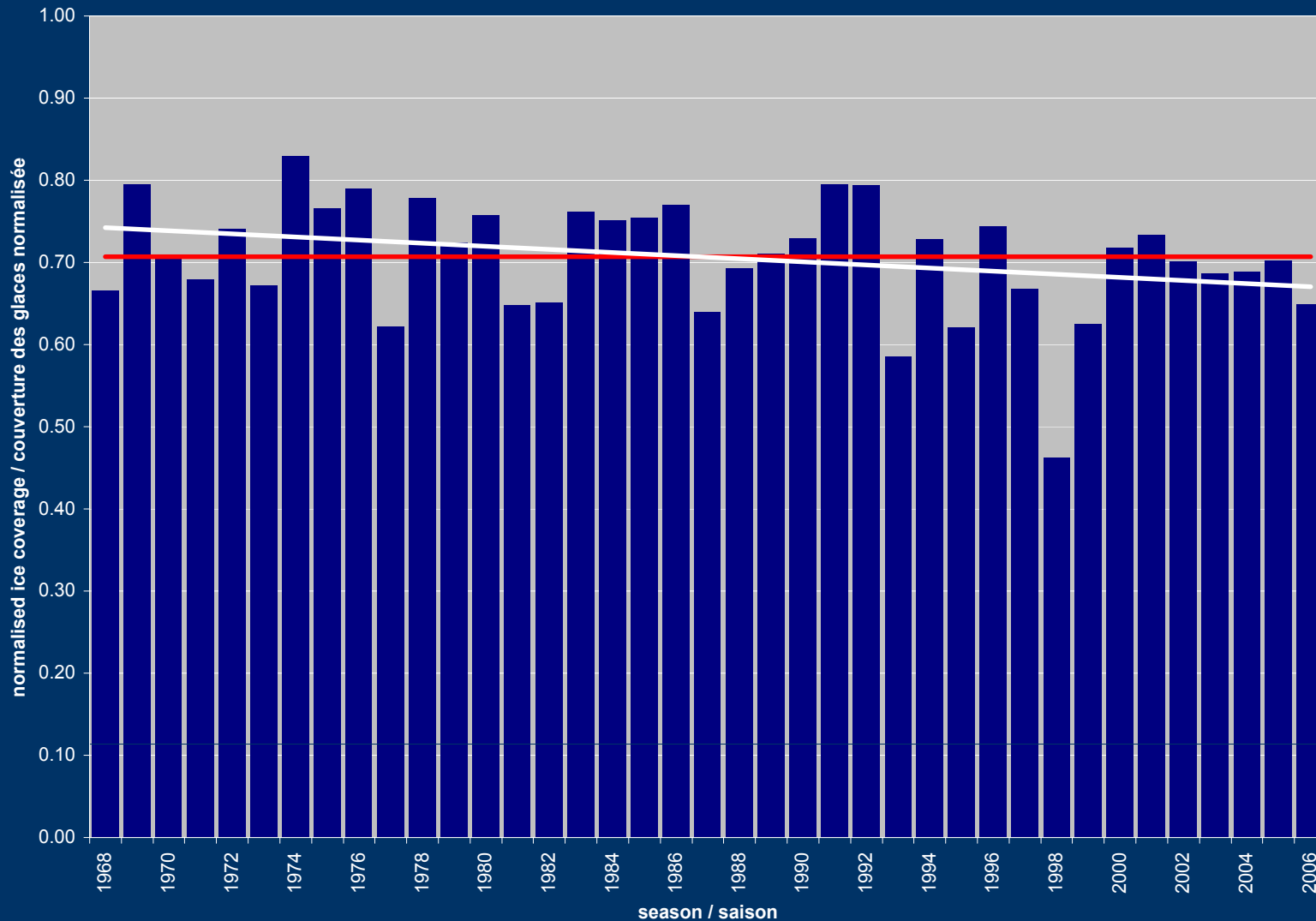


# Western Arctic

## 10% Decrease over the period 1968-2006

### Historical Total Accumulated Ice Coverage 0625 – 1015

Western Arctic / Arctique de l'Ouest



short name / nom en bref:  
WARCTIC

source region / région source:  
WA / AO

ice season (mddd) / saison  
des glaces (mddd):  
0625-1015

averages based upon / les  
moyennes basées sur:  
1971-2000

by / par:  
CIS / SCG



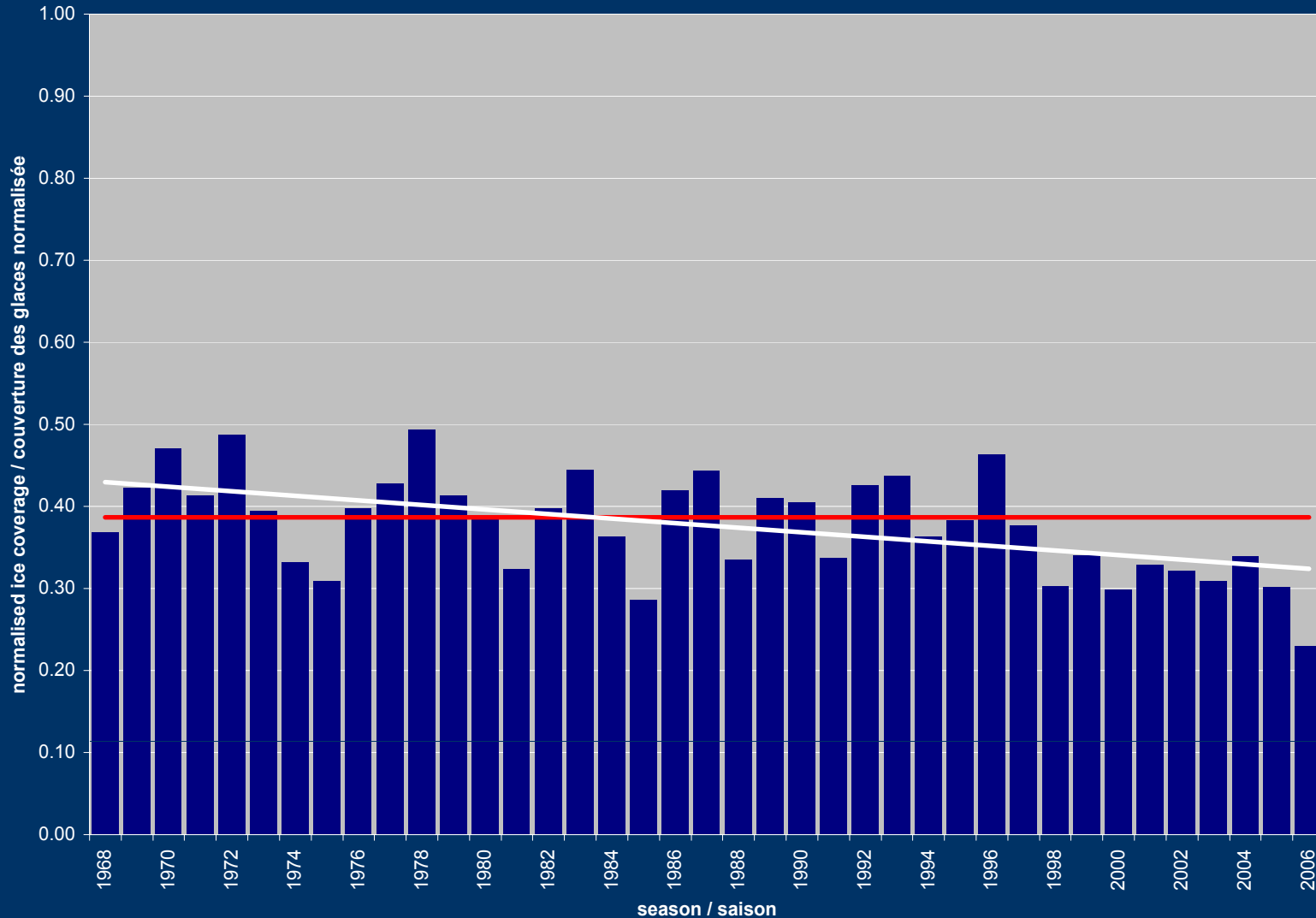


# Eastern Arctic

## 25% Decrease over the period 1968-2006

### Historical Total Accumulated Ice Coverage 0625 – 1015

Eastern Arctic / Arctique de l'Est



short name / nom en bref:  
EARCTIC

source region / région source:  
EA / AE

ice season (mddd) / saison  
des glaces (mddd):  
0625-1015

averages based upon / les  
moyennes basées sur:  
1971-2000

by / par:  
CIS / SCG

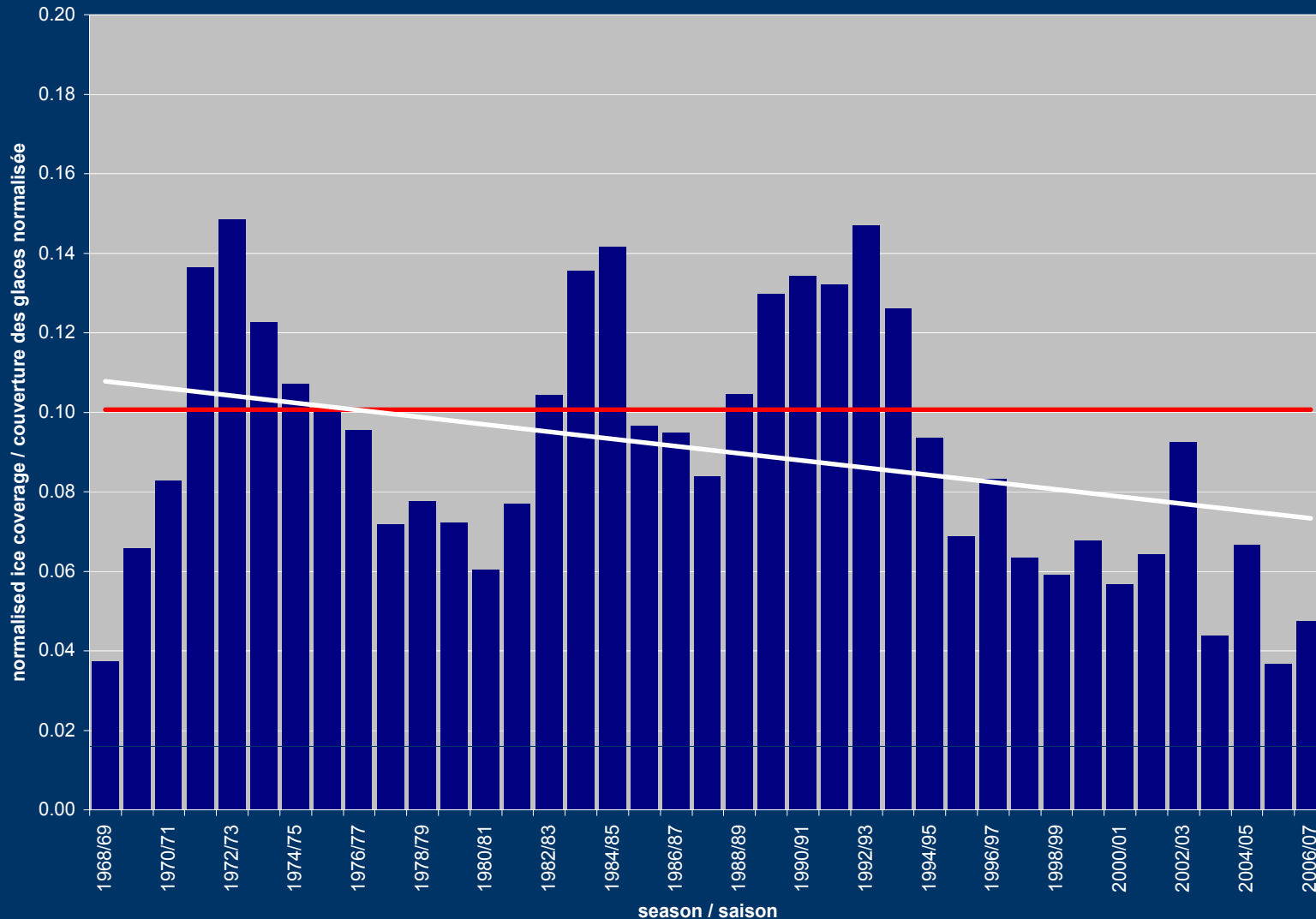


# East Coast

## 31% Decrease over the period 1969-2007

### Historical Total Accumulated Ice Coverage 1126 – 0716

Eastern Coast / Côte Est



short name / nom en bref:  
ECOAST

source region / région source:  
EC / CE

ice season (mddd) / saison  
des glaces (mddd):  
1126-0716

averages based upon / les  
moyennes basées sur:  
1970/71-1999/00

by / par:  
CIS / SCG

